



PREMIUM CHALETs
COLLECTION 2021/22

www.larkfactory.com



Lark Leisure Homes Factory

For 5 years, we have been making people's dreams come true by producing homes made with exceptional passion and commitment. The dream of family home to rest and to spend beautiful moments together. A house where we feel safe, the house which can withstand any bad weather.

Currently, we deliver our products to almost 40 countries, being the largest and most modern factory in western and central Europe. Lark's offer includes mobile homes, modular homes, sanitary houses, SPA houses. We are the experts specializing in wooden structure technology, a technology appreciated all over the world for its durability and speed of production. While maintaining the highest standards of production, we meet the market needs and unprecedented quality.

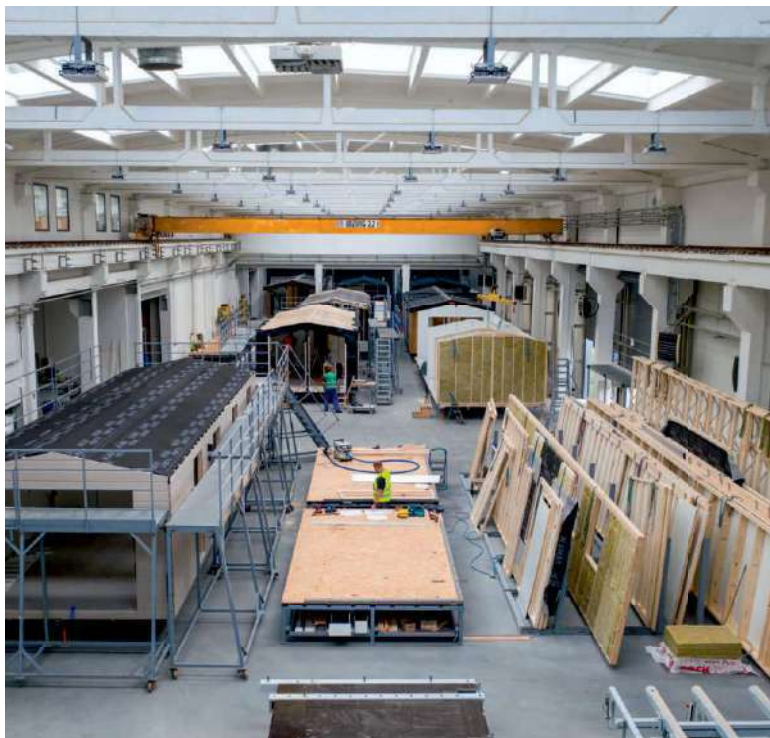




LOGISTICS

A modern Logistics center provides our customers with fast, safe and effective transport regardless of the distance. Lark logistics is the highest class transport equipment and qualified staff specializing in the transport of mobile homes and oversize loads. Lark's logistics is primarily responsible for punctuality and diligence resulting from many years of experience in the international transport of small and large format loads. We take care of each load as if it were our own. There is no obstacle for us that we will not overcome, our task is to deliver just in time.





Modern and multifunctional assembly halls

The idea of launching a modern house factory was born out of a passion for travel and many years of experience in the hotel industry. After more than five years of preparation and visits to leading factories in the world, the most modern factory of mobile and modular houses in central and eastern Europe was launched. We have developed and patented a number of unique technological and construction solutions that have begun to build a competitive advantage of Lark products on a global scale. This is why our products are of exceptional quality, durable and comfortable to use.

Modern machinery and own production of components

We are aware that only the most modern production machines can guarantee us the possibility of making a top-class product. Thanks to this we are able to produce a very durable, hot-dip galvanized mobile chassis with a load capacity up to 12 tons, with a modular structure adaptable to various sizes of houses. Our own furniture production offers our customers what we would like to get ourselves – extremely durable and tailored made furniture.



Dynamic development

The factory has been operating since 2015 and recorded a very dynamic development on the European market. We actively promote our products at the largest industry fairs and develop distribution networks throughout the Europe. Thanks to these activities our products are already sold in large quantities, among countries like Germany, Belgium, the Netherlands, France, Denmark, Norway, Ireland, Poland, the Czech Republic, Austria and Switzerland.

Confirmed quality

As the only producers of mobile homes in Continental Europe, we have TÜV (Technischer ÜberwachungsVerein) and NCC (National Caravan Council) certificates, which confirm the compliance of our products with European and national standards, as well as very high standards of implementation and quality supervision over the production process, widely appreciated by our recipients. In order to meet strict British standards, we have become members of the British organization BSI Group – one of the most recognized and reputable management systems certification bodies in the world. BSI's activities focus on technical aspects, business standards and help organizations strive for excellence. Thanks to this we achieve even better results.



Guarantee of safety

As the only manufacturer of mobile homes, we decided to test the load-bearing capacity of the house structure with an additional load, e.g. a snow cover. The simulation was carried out by uniformly distributing the load equal to 7 tons on the roof. During the test, all the windows and doors opened and closed without any problems, which means that the weight did not have the slightest effect on the structure of the house. As a result, we have obtained a Certificate of full compliance with the European standard EN 1647, specifying the required living conditions for the health and safety of motorhomes and mobile homes. We have thus proved that our houses are a durable and safe structure, giving its residents maximum safety and comfort of use.

Quality control

Each home that leaves the Lark Leisure Homes factory undergoes a series of detailed inspection and thorough various technical tests. A team of qualified experts checks the house piece by piece, to be 100% sure that it will reach the customer in perfect condition. The quality of our products is a priority issue and each of our homes is a proof of it.





ISO 9001

ISO 9001 is an international, recognized standard of the quality management system. The ISO 9001 standard refers to the processes that create and supervise the products and services provided to the customer. Meeting the requirements of the standard allows for systematic supervision over activities aimed at ensuring that the needs and requirements of customers are met at the highest level. The ISO 9001 certificate is a reliable proof that all processes carried out in our factory are oriented towards the highest quality.

Team Lark

Lark is a well-coordinated team of people with a passion for life and a passion for work. Each of us with the highest commitment puts his heart into everyday tasks, knowing that our client expects such an approach. As a result, we have built lasting and friendly relationships with recipients around the world. At any time, we are ready to help, support and advise in the difficult choices of the right house. Remember we are here for you.



The highest level customer service

A team of qualified employees supervises the successful course of the customer service process in the field of consulting and selling our homes. Customer satisfaction is the major concern of our operation.



READY HOUSE TO THE INDICATED ADDRESS

Short lead time, only you decide what it will be like and where we will deliver it. Now you can live where it was not possible before. This is much faster than with traditional construction methods.



YOUR SAFETY IS OUR PRIORITY

Our houses meet European requirements contained in the EN 1647 standard. We use the highest quality materials, in which we have full confidence.



WHAT IS INVISIBLE TO THE EYE IS IMPORTANT

The ventilated facade system protects the interior, prevents heat from escaping and ensures the required tightness of the house. It prevents rainwater from penetrating into the insulation, and also helps to remove water vapor that migrates from the inside to the outside of the house.



INTERIOR PERSONALISATION

A number of options for additional equipment and interior design will give you the opportunity to configure your home according to your expectations and needs.



FUNCTIONALITY AND WIDE RANGE OF MODELS

We offer a wide range of models in various dimensional variants. Depending on whether you are planning a trip for two or with the whole family, we offer a variety of room layouts.



Trustworthy
Company



A Success
Flag Award
2018



The Statue for
the Personality
of the year 2018



Our Goods
from Pomerania
Award



A Global
Company
Award



The Business
Cheetah
Award



A Success
Flag Award
2019



The Statue for
the Personality
of the year 2019



Polish
Innovativeness
Award 2019



Symbol of Modern
Technologies
Award 2019



„It's good because
it's local"
Certificate 2020



„Eagles of Polish
Entrepreneurship"
Award 2020



Polish Quality
Award 2020



MADE IN POLAND
2020

„Made in Poland"
Award 2020



Murano	10
Chios / Chios Senior	14
Ibiza	19
Positano	23
Cavallino	27
Lido	31
Capri	35
Capri Luxurior	36
Korfu	39
Texel	43
Ballum	47
Sylt	50
Joli / Joli Natur	53
Sheraton / Sheraton Terrace	57
Jersey	61
Elba	64
Venezia	67
Adriatic	70
PAG	71
Santorini	72
Tahiti	73
Nordic Star	76
Grande / Piccolo Leone	79
Small Pod	82

Bergen	83
Small Pod Terrace	84
Twin Pod	85
Malta	88
Malta Roof Terrace	88
Malta Terrace	89
Lanzarote	91
Fuerteventura	92
Mallorca	93
Menorca	94
G-SPOT	95
Modern	96
Popular	97
Hollum	98
Hollum Terrace	99
Madera Terrace	100
Möwe	102
Lazur	106
Lazur Terrace	107
Saint Michel	108
Sainte Maxime	109
Saint Malo	110
Saint Laurent	110
Sainte Marie Senior Lux	111

Saint Raphael	111
Saint Lazare	112
Sainte Marie Senior	112
Saint Nazareth	113
Saint Marc	113
Hotel Solution	114
Camping Solution	118
Touristic Solution	122
Mobile Office	125
Meeting Room	129
Canteen	131
Normobaric Chamber	132
Lark Golf Club	133
Standard Equipment	134
Extra Equipment	135
Finishes Guide	136
Warranty	152
Other products	153



#liveyourdream



FRIDGE WITH FREEZER



DISHWASHER WIDE (60cm)



DISHWASHER NARROW (45 cm)



WASHING MACHINE



INDUCTION / GAS HOB



OVEN



MICROWAVE



ELECTRIC BOILER



COMBI GAS BOILER



ELECTRIC FIRE



ANTENNA SOCKET



SOUND SYSTEM AND MP3 PLAYER



CLOTHES WARDROBE WITH SHELVES



WARDROBE WITH CLOTHES BAR



HANGER



MIRROR



FOLDABLE SOFA



PEDSTAL WITH DRAWRS



TV HANGER



TOILET PAPER HANGER



OPTIONS PAID EXTRES



Classic in a modern edition

It combines the best - minimalism, proven universal solutions and simplicity of execution. The versatility of interior design will also provide comfort to the most demanding leisure lovers. Murano is a project dedicated to people who appreciate the warmth of a home during family holidays - you will want to spend every free moment in it.



1. 12m x 4,06m / 39ft x 13ft

6+2 1



2. 12m x 4,06m / 39ft x 13ft

6+2 1



3. 12m x 4,06m / 39ft x 13ft

6+2 1



4. 12m x 4,06m / 39ft x 13ft

4+2 1



5. 12m x 4,06m / 39ft x 13ft

4+2 1



6. 12m x 4,06m / 39ft x 13ft

4+2 1



7. 12m x 4,06m / 39ft x 13ft

4+2 1



8. 12m x 4,06m / 39ft x 13ft

4+2 1



9. 10,4m x 4,06m / 34ft x 13ft

4+2 1



10. 10,4m x 4,06m / 34ft x 13ft

4+2 1



11. 9,6m x 4,06m / 31ft x 13ft

4+2 1



12. 12m x 4,06m / 39ft x 13ft

3+2 1



14. 10,4m x 4,06m / 34ft x 13ft

2+2 1

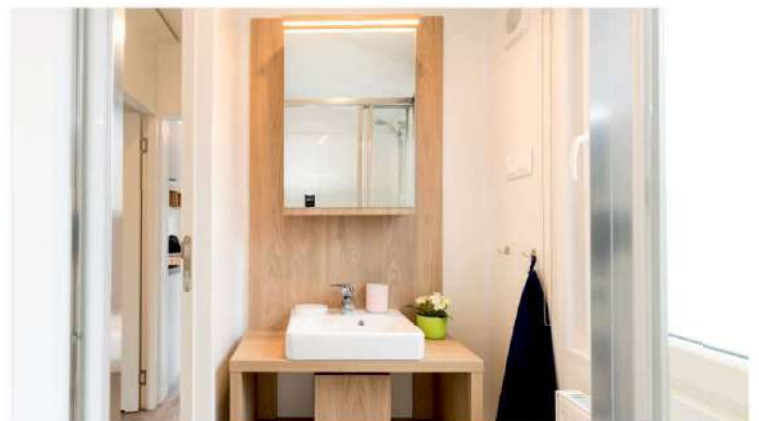
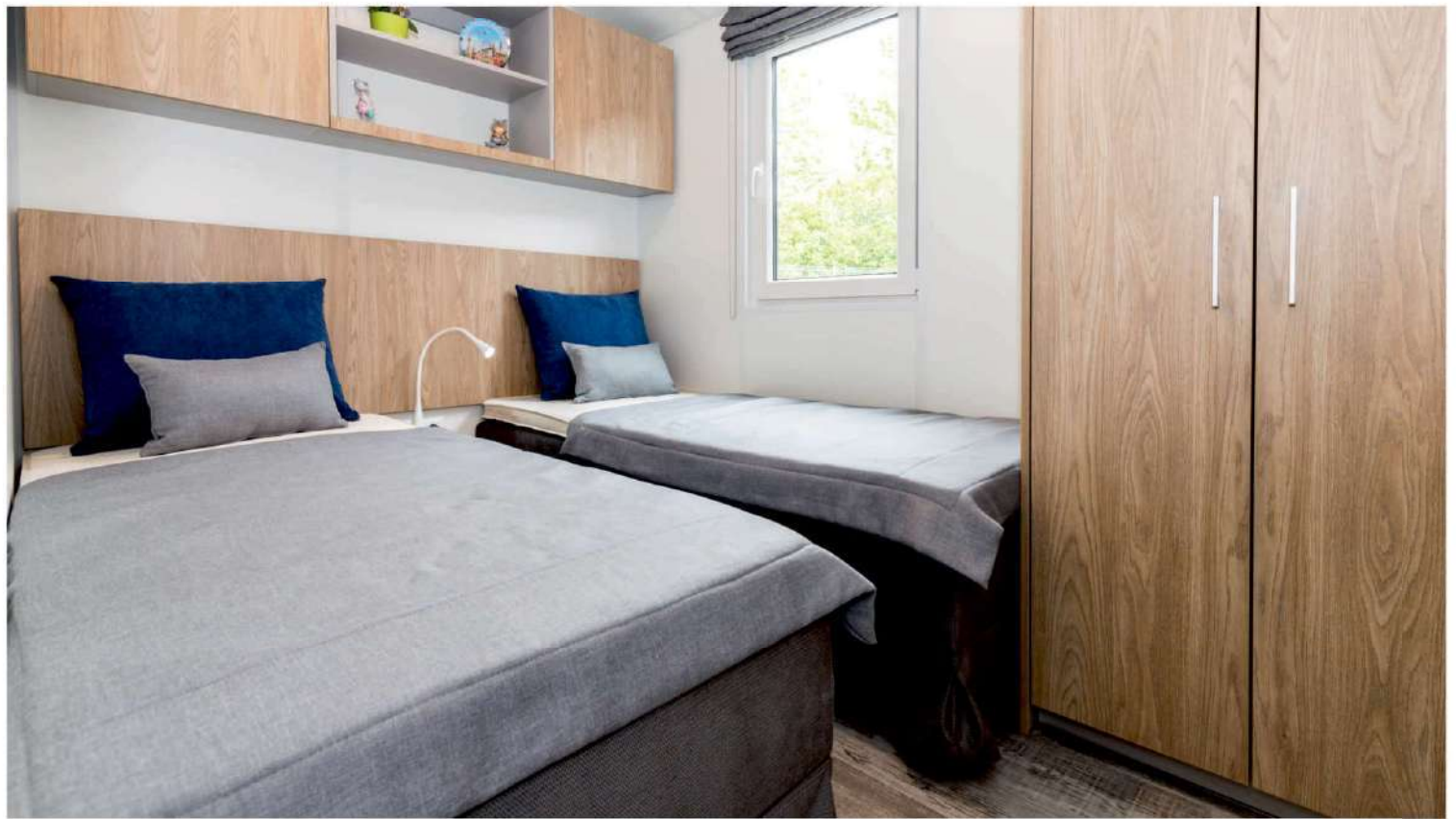


14. 10,4m x 4,06m / 34ft x 13ft

4+2 1



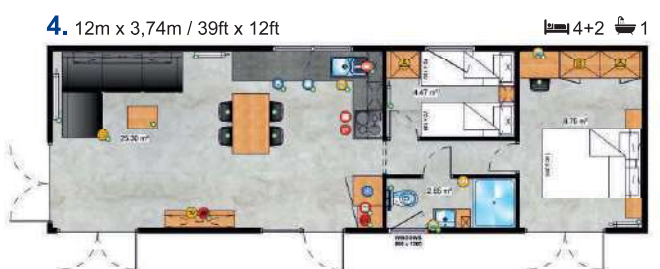






A beautiful view without limits

Chios is a calm and classic project with a delicate touch of modern style. Thanks to a large, corner terrace window, a very bright living area perfectly combines with a modern and functional kitchenette. In the sleeping area, the Chios series offers a solution of 2 or 3 bedrooms, so it is a proposal for two but also for the whole family.



5. 12m x 3,74m / 39ft x 12ft

4+2 1



6. 12m x 3,74m / 39ft x 12ft

2+2 1



7. 12m x 3,74m / 39ft x 12ft

4+2 1



8. 11,2m x 3,74m / 37ft x 12ft

4+2 1



9. 11,2m x 3,74m / 37ft x 12ft

4+2 1



10. 11,2m x 3,74m / 37ft x 13ft

4+2 1



11. 10,4m x 3,74m / 34ft x 12ft

2+2 1



12. 10,4m x 3,74m / 34ft x 12ft

2+2 1



13. 9,6m x 3,74m / 31ft x 12ft

4+2 1



14. 9,6m x 3,74m / 31ft x 12ft

4+2 1



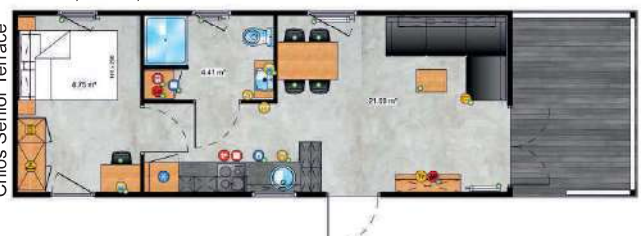
15. 9,6m x 3,74m / 31ft x 12ft

2+2 1



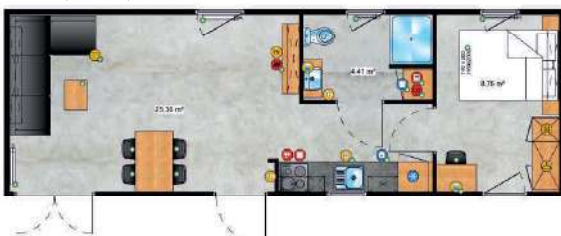
16. 12,5m x 3,74m / 41ft x 12ft

2+2 1



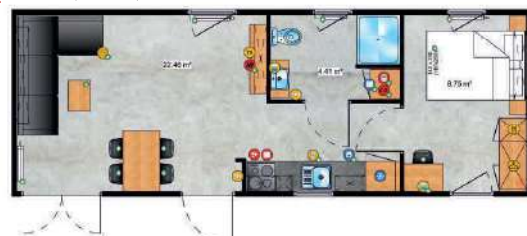
17. 11,2m x 3,74m / 37ft x 12ft

2+2 1



18. 10,4m x 3,74m / 34ft x 12ft

2+2 1





19. 11,2m x 3,74m / 37ft x 12ft

2+2 1



20. 9,6m x 3,74m / 31ft x 12ft

4+2 1



21. 10m x 3,74m / 33ft x 12ft

4+2 1



22. 9,2m x 3,74m / 30ft x 12ft

4+2 1



23. 9,6m x 3,74m / 31ft x 12ft

2+2 1



24. 12,5m x 3,74m / 41ft x 12ft

2+2 1



25. 12m x 3,74m / 39ft x 12ft

4+2 1



26. 12,5m x 3,74m / 41ft x 12ft

2+2 1



 Chios Senior

Apartment for seniors but not only

Chios Senior Apartment for seniors but not only For even greater comfort in cooking, the kitchen has been subtly integrated into a wide passage, becoming at the same time another room. The bathroom, corridor and internal doors of the Chios Senior model have been designed to facilitate daily use of the house for people with reduced mobility. Thus, each user will appreciate the comfort and space being the major advantage.







Unusual form illuminated by natural light

The characteristic gable of the Ibiza model also has one important function. It significantly increases the space in the living room, and additionally gives it an original shape and style. The living area is effectively divided with the sleeping area, which allows you to enjoy the comfort of Ibiza during the day and at night.



1. 12,24m x 3,74m / 40ft x 12ft

🛏️ 6+2 🚽 1



2. 12,24m x 3,74mm / 40ft x 12ft

🛏️ 6+2 🚽 1



3. 12,24m x 3,74m / 40ft x 12ft

🛏️ 4+2 🚽 1



4. 12,24m x 3,74m / 40ft x 12ft

🛏️ 4+2 🚽 1



5. 11,44m x 3,74m / 38ft x 12ft

4+2 1



6. 11,44m x 3,74m / 38ft x 12ft

4+2 1



7. 10,64m x 3,74m / 35ft x 12ft

4+2 1



8. 10,64m x 3,74m / 35ft x 12ft

4+2 1



9. 9,84m x 3,74m / 32ft x 12ft

4+2 1

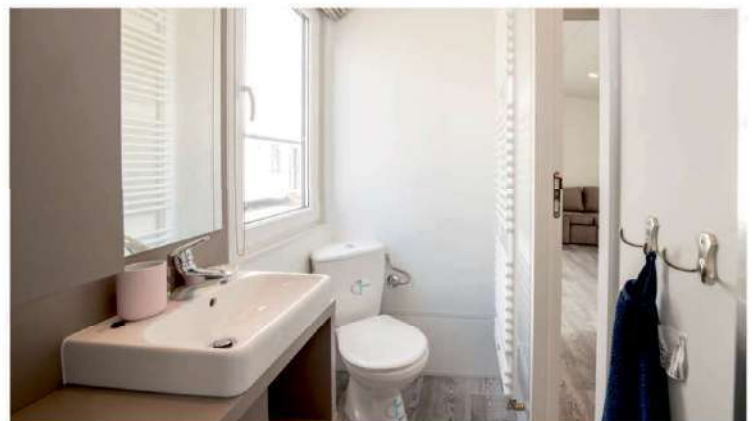


10. 9,84m x 3,74m / 32ft x 12ft

4+2 1









Simple form, but unusual solutions

From the outside, Positano presents the calm lines of the house, while inside, it offers a bold and practical layout. The master bedroom is effectively separated from the children's bedroom by a spacious living room, allowing privacy during "hot" nights. An additional advantage is the window with access to the terrace directly from the bedroom.



1. 12m x 3,74m / 39ft x 12ft

6+2 🛏 1



2. 12m x 3,74m / 39ft x 12ft

6+2 🛏 1



3. 11,2m x 3,74m / 37ft x 12ft

4+2 🛏 1



4. 11,2m x 3,74m / 37ft x 12ft

4+2 🛏 1



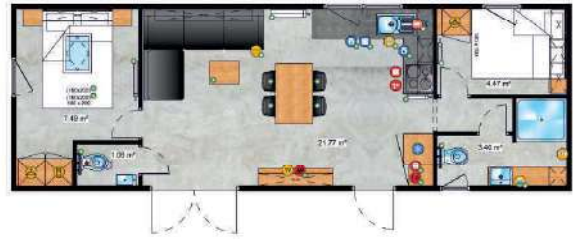
5. 11,2m x 3,74m / 37ft x 12ft

4+2 1



6. 11,2m x 3,74m / 37ft x 12ft

4+2 1



7. 10,4m x 3,74m / 34ft x 12ft

4+2 1



8. 10,4m x 3,74m / 34ft x 12ft

2+2 1



9. 9,6m x 3,74m / 31ft x 12ft

4+2 1



10. 9,6m x 3,74m / 31ft x 12ft

4+2 1



11. 9,6m x 3,74m / 31ft x 12ft

2+2 1



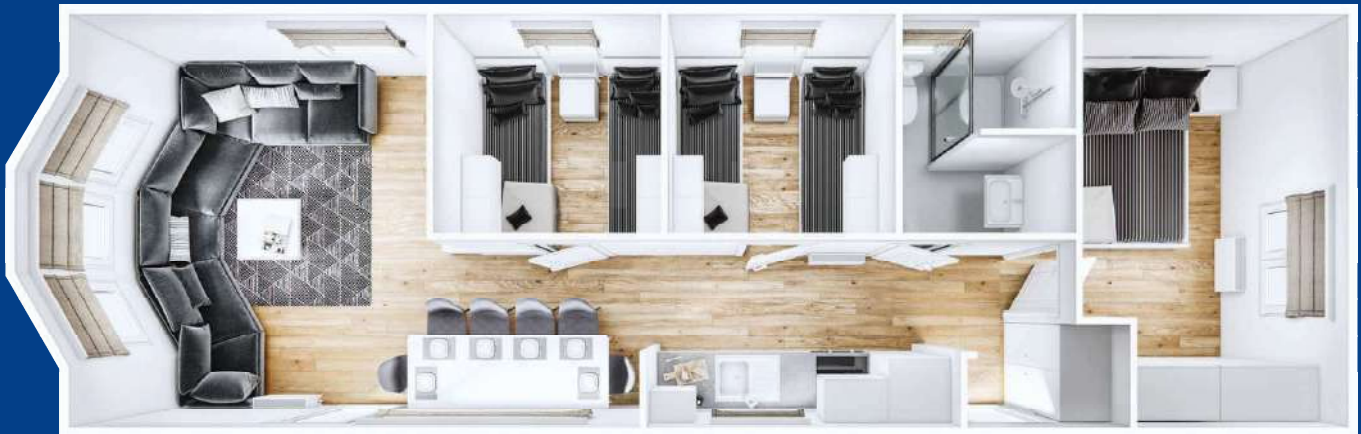






Interesting use of unusual architectural solutions

Window on the gable wall gave the entire form an unprecedented shape, but most of all it significantly increased the living room area. In addition, the kitchen integrated into the hallway of the house became another room without losing its most important function.



1. 12,5m x 4m / 41ft x 13ft

6+2 1



2. 11,7m x 4m / 38ft x 13ft

4+2 1



3. 11,7m x 4m / 38ft x 13ft

4+2 1



4. 10,9m x 4m / 36ft x 13ft

4+2 1



5. 10,1m x 4m / 33ft x 13ft

4+2 1



6. 10,1m x 4m / 33ft x 13ft

4+2 1



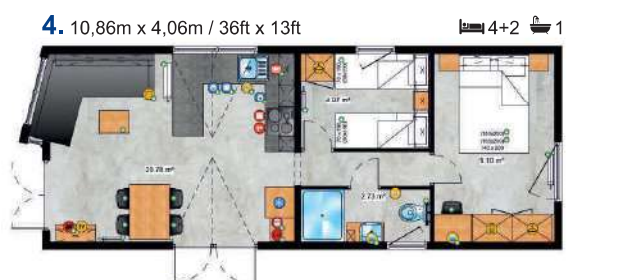






When you expect even more

Traditional, elegant and unusual. The use of many architectural flavors definitely distinguishes the Lido model from other houses. The exceptionally lit illuminated kitchen area is connected with the living room space and a beautiful view coming through large terrace windows.



5. 10,86m x 4,06m / 36ft x 13ft

2+2 1



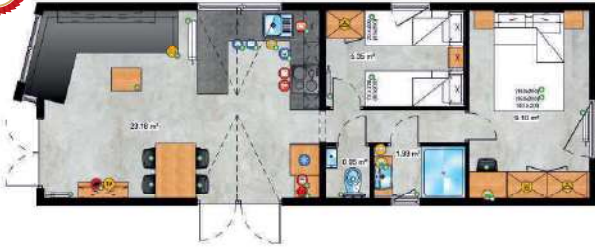
6. 12,46m x 4,06m / 41ft x 13ft

4+2 1



7. 11,66m x 4,06m / 38ft x 13ft

4+2 1



8. 10,86m x 4,06m / 36ft x 13ft

4+2 1









Capri is Lark's flagship model.

The unprecedented design impresses from the very first moment. The modern facade in combination with a slope window cutting through the roof

elevates this model to the top of innovative architecture. Capri means luxury and prestige. A model that is above average and a source of pride.

Elegant flagship in a tuxedo



1. 12,3m x 4,09m / 40ft x 13ft

6+2 1



2. 12,3m x 4,09m / 40ft x 13ft

4+2 1



3. 12,3m x 4,09m / 40ft x 13ft

2+2 1



4. 11,5m x 4,09m / 38ft x 13ft

4+2 1



5. 9,9m x 4,09m / 32ft x 13ft

4+2 1



6. 9,9m x 4,09m / 32ft x 13ft

4+2 1



7. 9,7m x 3,74m / 32ft x 12ft

4+2 1



8. 12,3m x 4,09m / 40ft x 13ft

2+2 1



9. 12,3m x 4,09m / 40ft x 13ft

6+2 1



LARK Capri Luxurior



10. 12,5m x 4,09m / 41ft x 13ft

4+2 1



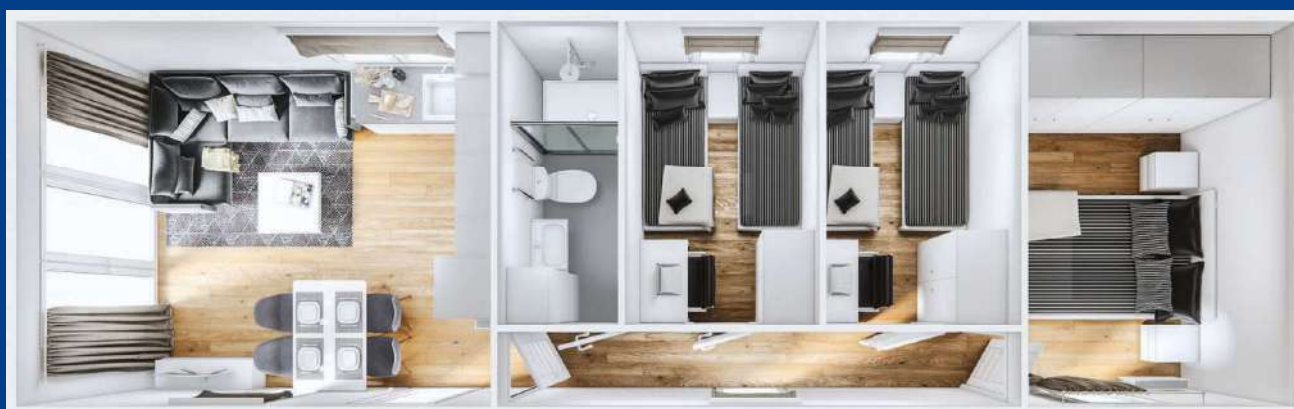






A house for the family - a happy family.

The Korfu model is able to accommodate up to 8 people and the appropriately designed ergonomic layout of the rooms perfectly divides the space of daily use from cozy bedrooms. In the living room, thanks to the fully glazed gable wall, home users can enjoy a bright interior, finished with top-class materials.



1. 12m x 3,74m / 39ft x 12ft

6+2 1



2. 12m x 3,74m / 39ft x 12ft

6+2 1



3. 11,2m x 3,74m / 37ft x 12ft

6+2 1



4. 11,2m x 3,74m / 37ft x 12ft

4+2 1



5. 11,2m x 3,74m / 37ft x 12ft

🛏 4+2 🚿 1



6. 10,4m x 3,74m / 33ft x 12ft

🛏 4+2 🛁 1



7. 10,4m x 3,74m / 33ft x 12ft

 2+2 1



8. 9,6m x 3,74m / 31ft x 12ft

 4+2 1

9. 9,6m x 3,74m / 31ft x 12ft

🛏 4+2 🛁 1



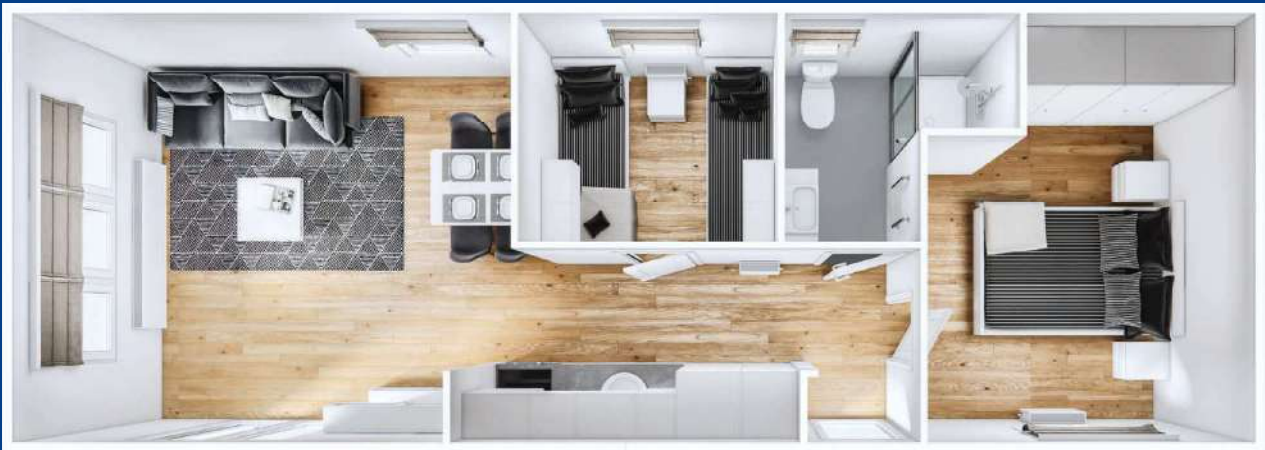






Form follows function

Functionality was the main priority in this project. A wide corridor and a very large space in the living room allow a lot of freedom. A characteristic element of the Texel model is integrating the kitchen into the passage way, thus becoming a separate room.



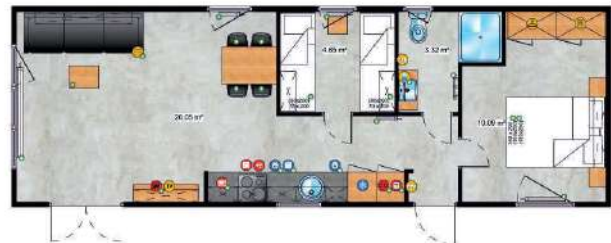
1. 12,5m x 4m / 41ft x 13ft

4+2 1



2. 12m x 4m / 39ft x 13ft

4+2 1



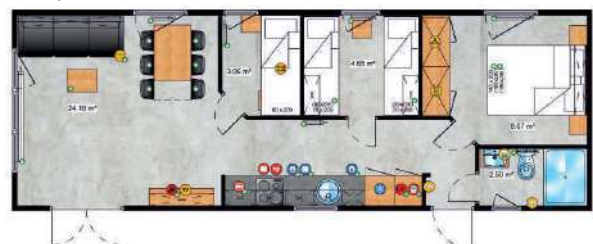
3. 12m x 4m / 39ft x 13ft

4+2 1



4. 11,6m x 4m / 38ft x 13ft

6+2 1



5. 11,2m x 4m / 37ft x 13ft

4+2 1



6. 11,2m x 4m / 37ft x 13ft

4+2 1



7. 11,2m x 4m / 37ft x 13ft

4+2 1



8. 10,5m x 4m / 34ft x 13ft

4+2 1



9. 10,5m x 4m / 34ft x 13ft

4+2 1



10. 10m x 4m / 33ft x 13ft

4+2 1



11. 10m x 4m / 33ft x 13ft

4+2 1



12. 9,6m x 4m / 31ft x 13ft

4+2 1



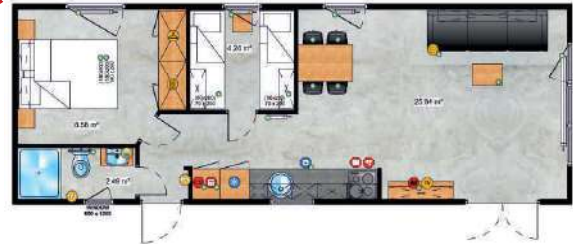
13. 12,5m x 4m / 41ft x 13ft

4+2 1



14. 11,2m x 4m / 37ft x 13ft

4+2 1









Mobile home with a terrace? Why not!

Due to the covered, integrated terrace, Ballum is perfect for places where beautiful views can take your breath away, and its users love to spend time outdoors. The master bedroom with a comfortable double bed has a double wardrobe divided into a private space for a Lady and a Gentleman. Ballum is the perfect home away from the city where peace and quiet are a natural part of the landscape.



1. 12,5m x 4m / 41ft x 13ft

4+2 1



2. 12,5m x 4m / 41ft x 13ft

4+2 1



NEW MODEL 3. 12,5m x 4m / 41ft x 13ft

2+2 1

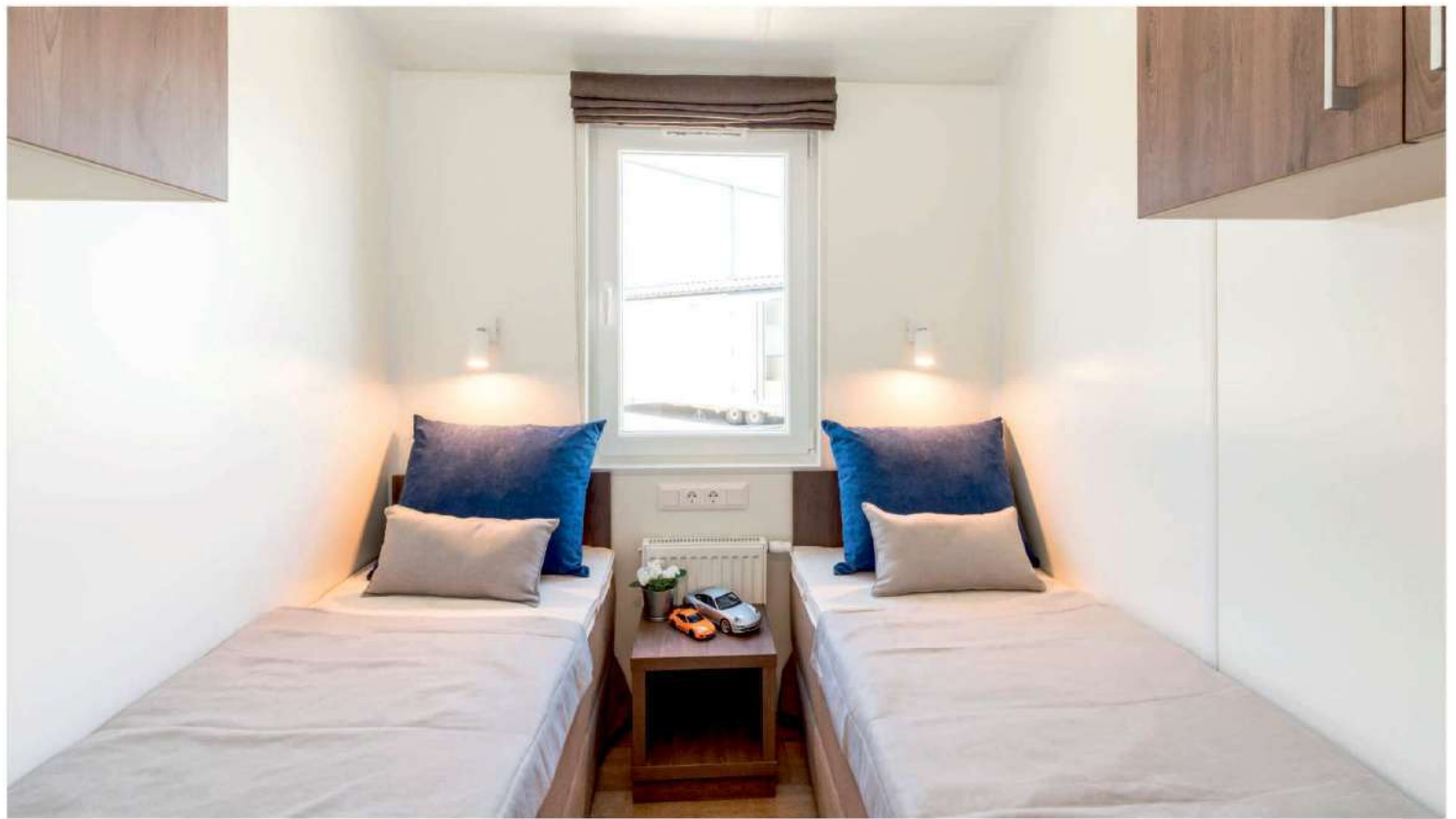


NEW MODEL 4. 12,5m x 4m / 41ft x 13ft

2+2 1







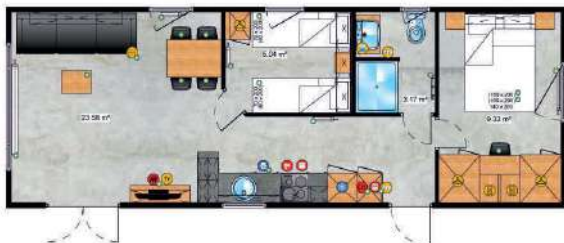


Space is just the beginning

You could say this is a classic of its kind. After a while spent in the Sylt home, you can forget that it is a home on wheels. Elegant and precise in every detail, yet modest and exceptionally subtle. A very spacious living room will convince anyone who respects their free time and appreciates every moment of a pleasant rest.



1. 11,2m x 4m / 37ft x 13ft  



2. 11,2m x 4m / 37ft x 13ft  



3. 11,2m x 4m / 37ft x 13ft  



4. 12,5m x 4m / 41ft x 13ft  



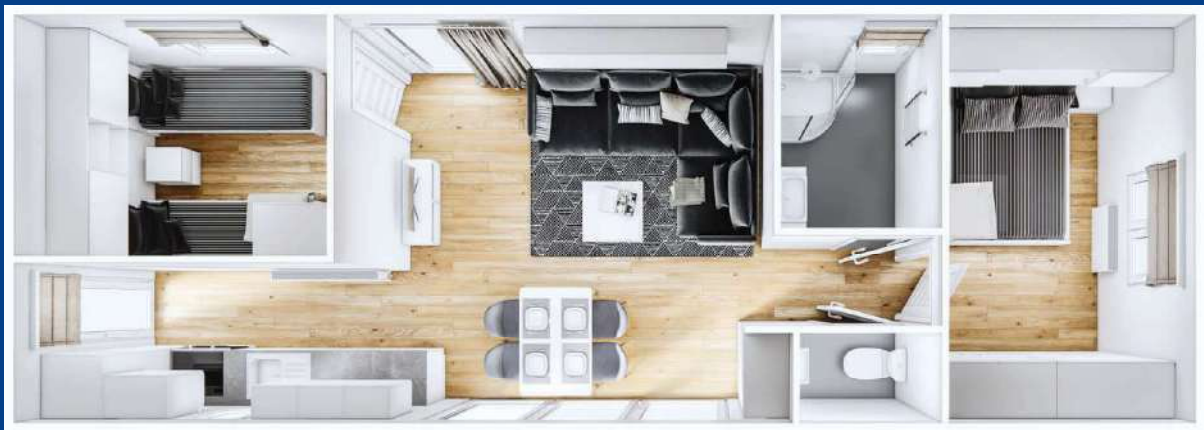






Natural harmony of modern style

Completely glazed and centrally located living room perfectly integrates the interior of the house with the outside space, which is perfect for a holiday vacation. A bathroom with a separate toilet is also definitely plus of the project from the JOLI collection. Thanks to this, everyday use of the house becomes even more pleasant.



1. 11,2m x 4m / 37ft x 13ft

🛏️ 4+2 🚿 1



2. 11,2m x 4m / 37ft x 13ft

🛏️ 4+2 🚿 1



3. 10,4m x 4m / 34ft x 13ft

4+2 1



4. 10,4m x 4m / 34ft x 13ft

4+2 1



5. 10,4m x 4m / 34ft x 13ft

2+2 1



6. 10m x 3,74m / 33ft x 12ft

4+2 1



7. 10m x 3,4m / 33ft x 11ft

4+2 1



8. 10m x 3,4m / 33ft x 11ft

4+2 1



9. 9,6m x 3,74m / 31ft x 12ft

4+2 1



10. 9,6m x 3,74m / 31ft x 12ft

4+2 1



11. 10m x 3,74m / 33ft x 12ft

4+2 1



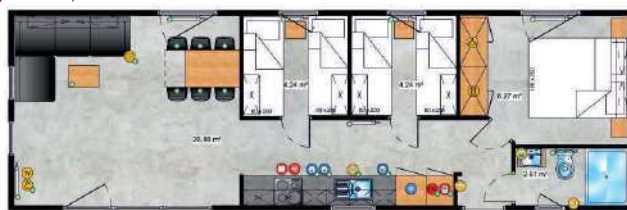
12. 10m x 3,4m / 33ft x 11ft

4+2 1



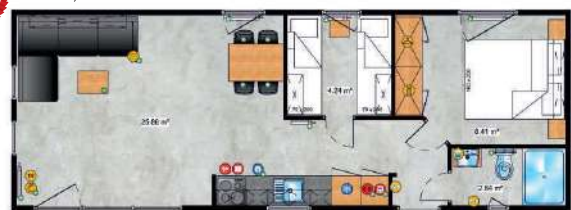
13. 12,5m x 4m / 41ft x 13ft

6+2 1



14. 11,2m x 4m / 37ft x 13ft

4+2 1



15. 10m x 4m / 33ft x 13ft

4+2 1



16. 12,5m x 4m / 41ft x 13ft

2+2 1



17. 11,2m x 4m / 37ft x 13ft

4+2 1









Comfort for a large family

Featuring 3 large double bedrooms, a second additional guest bathroom and a glazed living room with double sliding doors. Great as a seasonal holiday home or a year-round apartment for the whole family.



LARK Sheraton Terrace



1. 12m x 4m / 39ft x 13ft

6+2



NEW MODEL II

2. 12m x 4m / 39ft x 13ft

4+2



NEW MODEL III

3. 9,6m x 4m / 31ft x 13ft

2+2



NEW MODEL III

4. 9,6m x 4m / 31ft x 13ft

3+2



NEW MODEL III

5. 9,6m x 4m / 31ft x 13ft

3+2



NEW MODEL III

6. 12m x 4m / 39ft x 13ft

2+2



NEW MODEL III

7. 12m x 4m / 39ft x 13ft

3+2



NEW MODEL III

8. 12m x 4m / 39ft x 13ft

4+2



NEW MODEL III

9. 12m x 4m / 39ft x 13ft

2+2



NEW MODEL III

10. 12m x 4m / 39ft x 13ft

2+2



NEW MODEL III

11. 11,2m x 4m / 37ft x 13ft

2+2



NEW MODEL III

12. 11,2m x 4m / 37ft x 13ft

2+2



NEW MODEL III

13. 10m x 4m / 33ft x 13ft

2+2



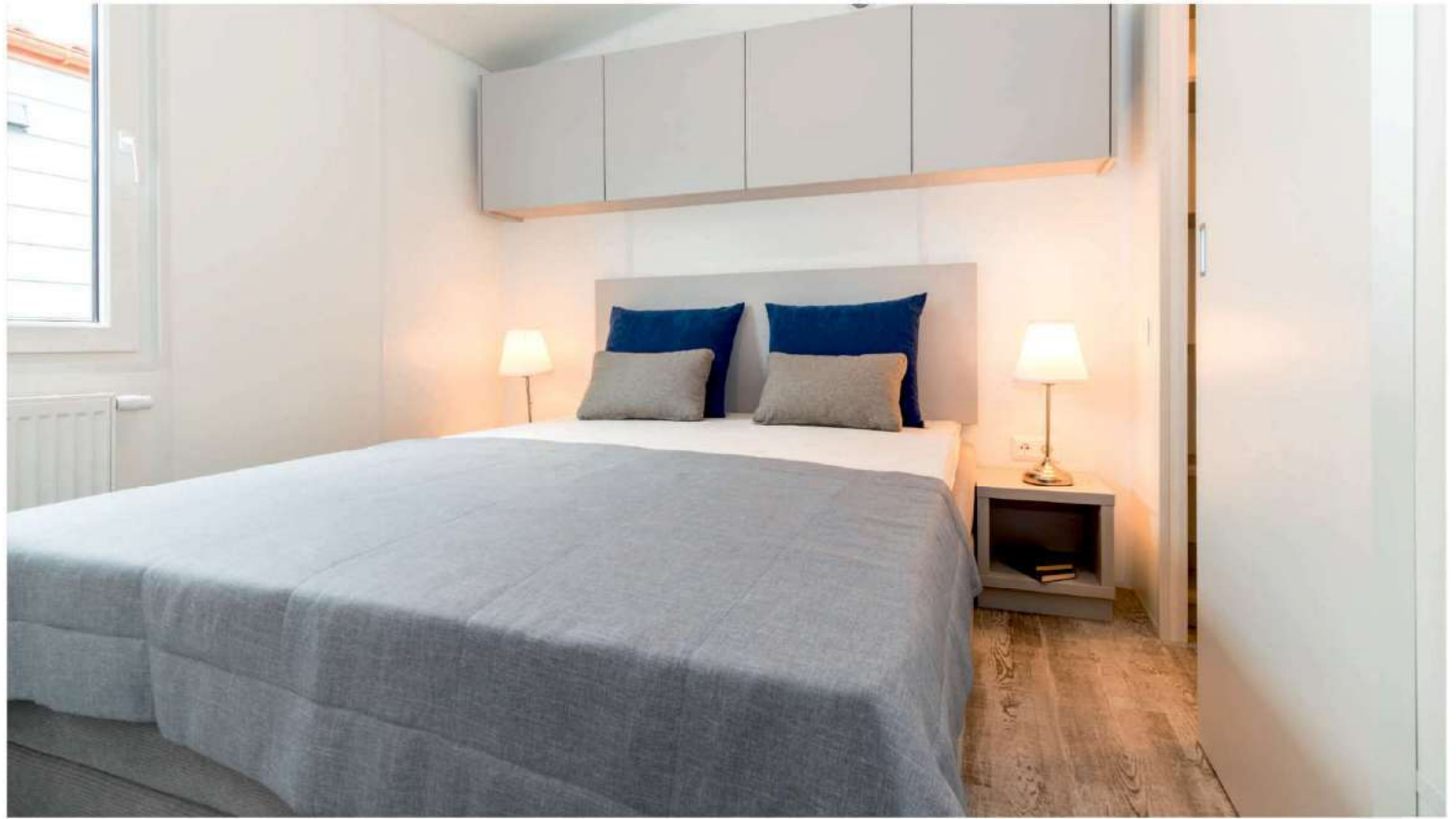
NEW MODEL III

14. 12m x 4m / 39ft x 13ft

2+2









A favourite of many

A mobile home inspired by the classic British style, which does not lack many practical and modern solutions. Already from the entrance, we are welcomed by a bright, heavily glazed living room with direct access to the terrace, and two comfortable sofas encourage common conversations of the whole family and friends. The kitchen is distinguished by stylish and practical furniture and the dining table that can also serve as a kitchen island. The kitchen leads directly to the sleeping area of the house, where a cosy master bedroom is a real surprise. The wardrobe with a direct entrance to the bathroom functions as a spacious dressing room with a dressing table dedicated for ladies.



1. 12m x 4m / 39ft x 13ft

4+2 1



2. 12,3m x 4m / 40ft x 13ft

4+2 1



3. 12m x 4m / 39ft x 13ft

4+2 1



4. 12m x 4m / 39ft x 13ft

4+2 1









The sum of all advantages

Very interesting kitchen furniture with an island and a wardrobe, in which, after sliding the door, an additional worktop and a bar will appear in one. The corridor leads to the sleeping area with comfortable bedroom furniture.

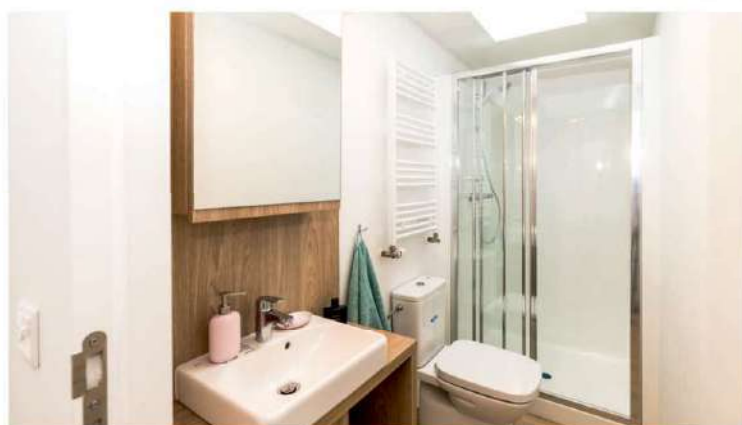


1. 12m x 3,74m / 39ft x 12ft

4 1









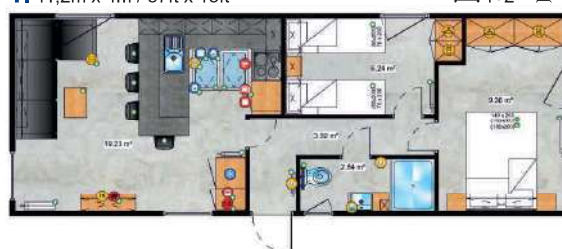
The character of a Venetian street

Entering the house, right from the start we are welcomed by a glazed living room with a large corner sofa, which encourages the whole family to spend free time together. The corridor with the kitchen leads us straight into the spacious bedroom with direct access to the terrace. The corridor with the kitchen leads us straight to the spacious bedroom with direct access to the terrace.



1. 11,2m x 4m / 37ft x 13ft

4+2 1



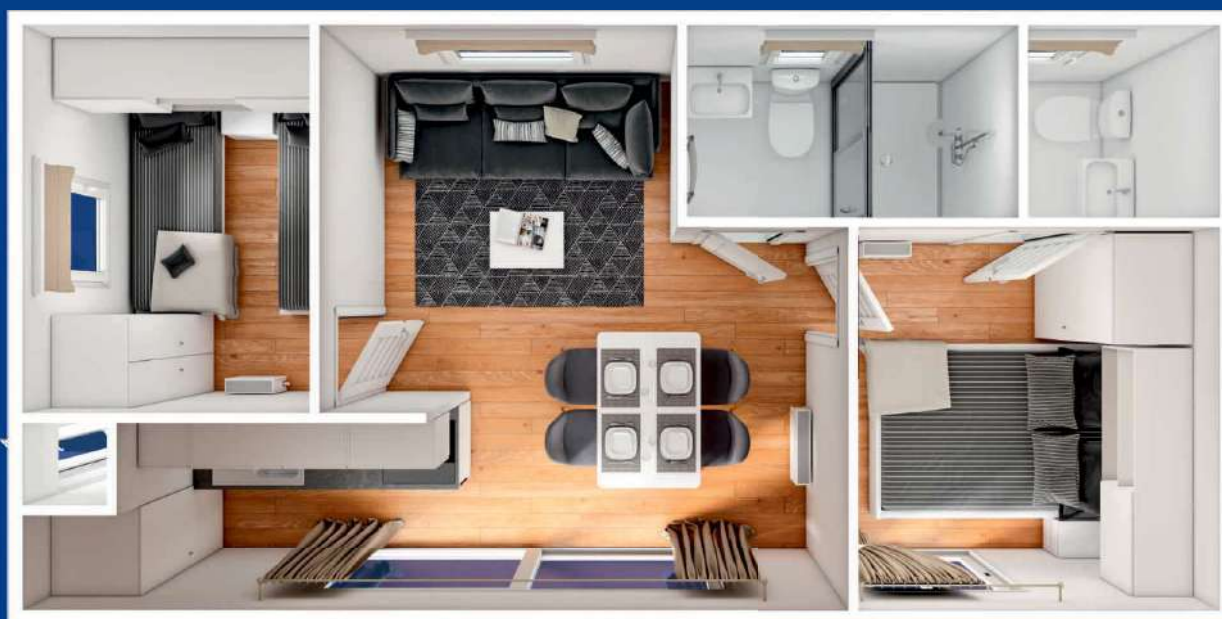






"Small" with great character

A project from a collection of houses with smaller dimensions. Despite the area of 32m², it offers 6 sleeping places with full functionality. Designed for use on small, inaccessible plots, thus an ideal proposition for a camping.



1. 8m x 4m / 26ft x 13ft 4+2 1



2. 8m x 4m / 26ft x 13ft 4+2 1



3. 8m x 4m / 26ft x 13ft 4+2 1





*There is enough space
for everyone*

All the features of the PAG project provides all the comfort that can be expected from a home. The original shape is distinguished by a completely glazed, protruding gable wall, thus increasing the space in the living room.



1. 12,24m x 3,74m / 40ft x 12ft

6+2 1



2. 12,24m x 3,74m / 40ft x 12ft

6+2 1



3. 11,44m x 3,74m / 38ft x 12ft

4+2 1



4. 11,44m x 3,74m / 38ft x 12ft

4+2 1



5. 10,64m x 3,74m / 35ft x 12ft

4+2 1





Beauty is in simplicity

The division of the house into a living area and a night area is the main advantage of the Santorini project. Additionally, the introduction of a delicate stylistic treatment allowed to go beyond the standard of classic mobile homes.



1. 12,5m x 3,74m / 41ft x 12ft

6+2 1



2. 12,5m x 3,74m / 41ft x 12ft

6+2 1



3. 11,7m x 3,74m / 38ft x 12ft

4+2 1



4. 11,7m x 3,74m / 38ft x 12ft

4+2 1



5. 10,9m x 3,74m / 36ft x 12ft

4+2 1





"L" like Love

A house with an unusual form but still a mobile home. Transported in two elements and connected on the plot, the Tahiti model is a perfect solution for plots with difficult access. The ease of maneuvering with smaller modules will allow you to place the house, e.g. among trees.



1. 8,8m x 7m / 26ft x 10ft

4+2 2



2. 8m x 6m / 26ft x 20ft

5 2



3. 8m x 6m / 26ft x 20ft

5 2



4. 8,8m x 3,74m / 29ft x 12ft

5 2



5. 8,55m x 3,74m / 28ft x 12ft

5 2









A house for special tasks

The offer is aimed mainly at the Scandinavian markets. The wall insulation system used allows for comfortable use of the house in extremely difficult weather conditions throughout the year. The modern shape will work great both among urban architecture and outside the city, and an exceptionally beautiful living space with matching materials and elements of equipment will ensure comfort of use.



1. 11,2m x 3,45m / 37ft x 11ft

4+2 1



2. 10,4m x 3,4m / 34ft x 11ft

4+2 1



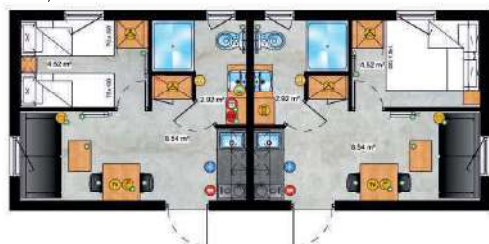
3. 10,4m x 3,1m / 34ft x 10ft

4+2 1



4. 9,6m x 4m / 31ft x 13ft

4 2



5. 8m x 3,4m / 26ft x 11ft

2+2 1



6. 8m x 3m / 26ft x 10ft

2+2 1







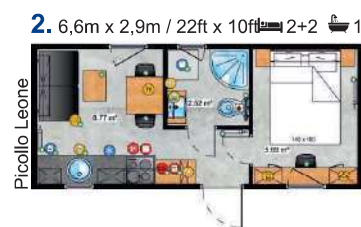
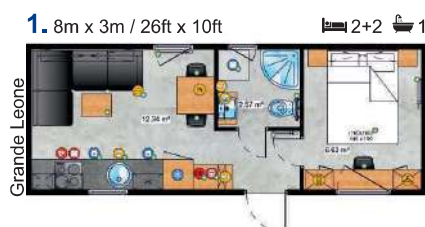


*Small on the outside,
big on the inside*

The Grande Leone collection of mobile homes is a tribute to the needs of houses with a small external size, but large enough inside to comfortably accommodate the whole family. Thanks to its small dimensions, it is an exceptionally practical model. It will be perfect where there is no place to build a larger house, allowing you to enjoy the charms of rest on any plot.

A small house, and it enjoys

Piccolo Leone is one of the smaller houses in the LARK offer. On an area of almost 20 m², thanks to the well-thought-out ergonomics of the room layout, it was possible to fit a lot. Thanks to its small external dimensions, it is an exceptionally practical model. It will do great where there is no room for a larger house. Fully equipped sanitary rooms, spacious bedroom and, above all, the quality of materials and finishes as in a high-class apartment.



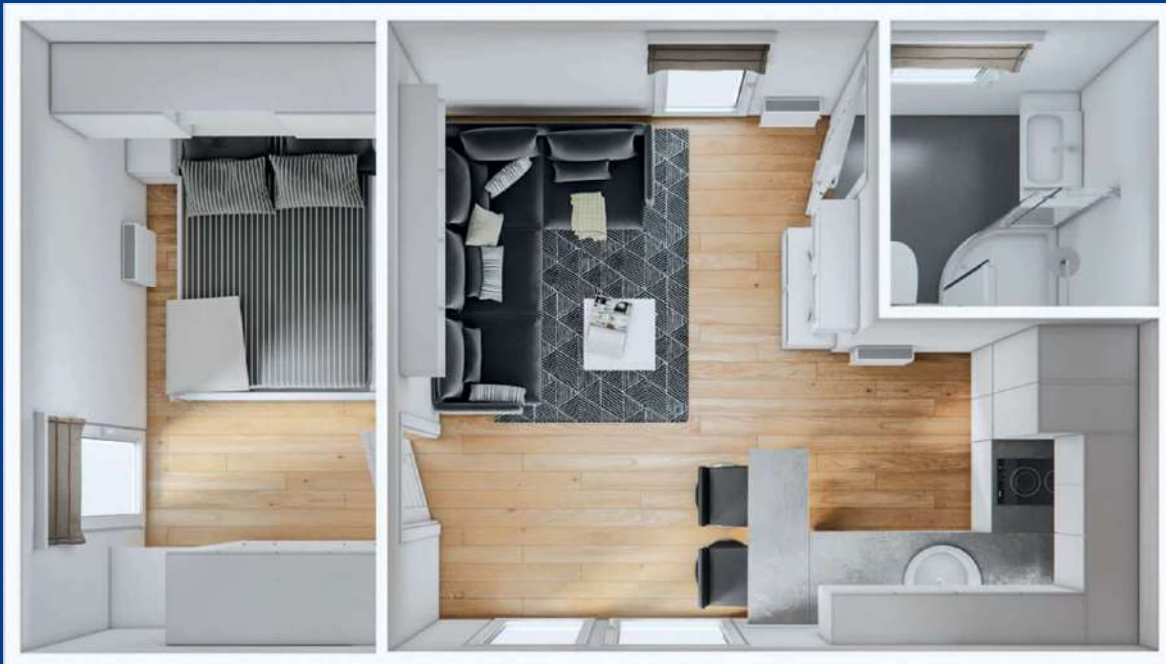






Small house - big possibilities

The smallest houses in the Lark offer, but extremely functional. Even 16m², while maintaining full functionality, allows you to enjoy the comfort and relax wherever you want.



1. 6,6m x 3,74m / 22ft x 12ft



2. 6,6m x 3,74m / 22ft x 12ft



3. 4m x 4m / 13ft x 13ft

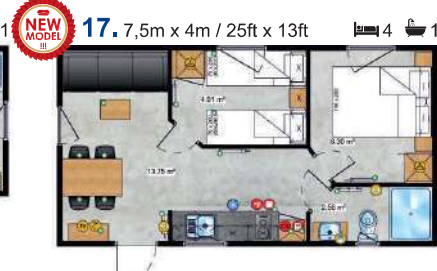


NEW MODEL II
4. 6m x 4m / 20ft x 13ft



NEW MODEL II
5. 6m x 4m / 20ft x 13ft





LARK Bergen I

LARK Bergen



LARK Bergen II



LARK Bergen III





LARK Small Pod Terrace



1. 8m x 4m / 26ft x 13ft

2 1



2. 8m x 4m / 26ft x 13ft

2 1



3. 7m x 4m / 23ft x 13ft

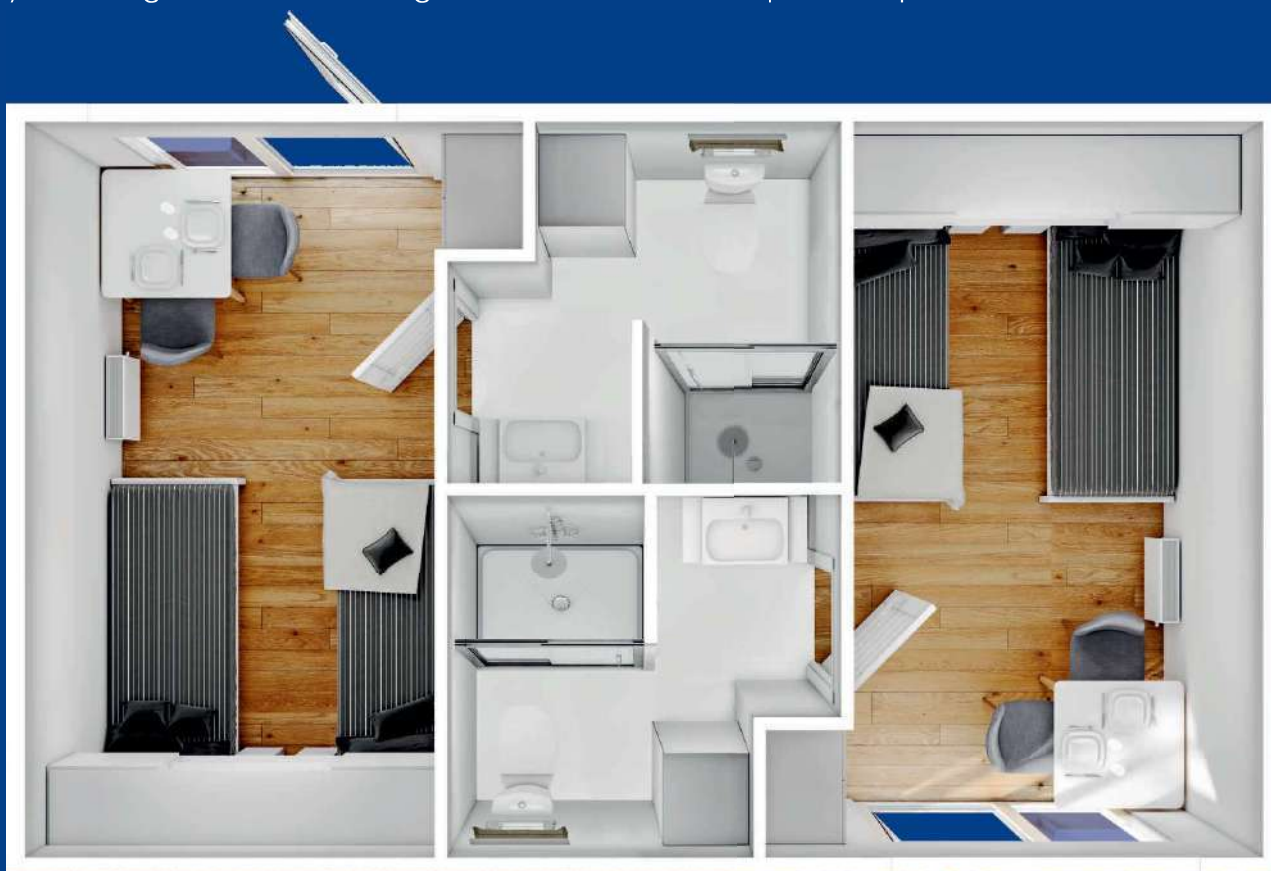
2 1







Twice as practical

2 apartments in one module in a very interesting and practical configuration. Twin Pod has been designed so that the entrances are on opposite sides of the house, which allows you to forget that the building is divided into two independent parts.



1. 6,6m x 4m / 22ft x 13ft  4  2









 Malta
roof terrace





Use of the roof area

The first mobile home with roof terrace project in the world. A mobile home where the roof area has been used for a recreational terrace where, for example, an electric grill and garden furniture can be used for relaxation. There is also a version with a lower terrace to choose from.



1. 10,4m x 4m / 34ft x 13ft  



5,78 x 4m / 19ft x 13ft





2. 8,4m x 4m / 28ft x 13ft  



4,6 x 4m / 15ft x 13ft



3. 8,4m x 4m / 28ft x 13ft  



3,78 x 4m / 12ft x 13ft



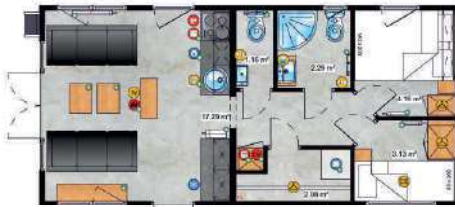
4. 8,4m x 4m / 28ft x 13ft  



3,78 x 4m / 12ft x 13ft



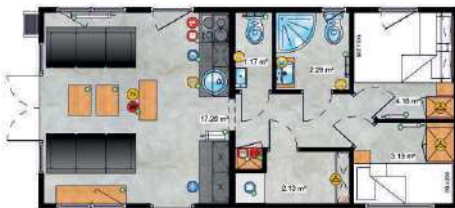
5. 8,4m x 4m / 28ft x 13ft  



3,78 x 4m / 12ft x 13ft




6. 8,4m x 4m / 28ft x 13ft  



3,78 x 4m / 12ft x 13ft



7. 8,4m x 4m / 28ft x 13ft  



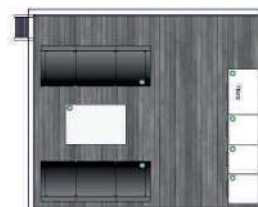
4,6 x 4m / 15ft x 13ft



8. 8,4m x 4m / 28ft x 13ft  



4,6 x 4m / 15ft x 13ft



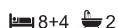


Connection gives more possibilities

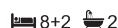
Thanks to the modern system of connecting modules, the imagination of Lark's engineers allow us to present the literally unprecedented shape of the mobile home. Independent elements arranged in a very thoughtful way open the way to configure new projects of single or multi-family houses.



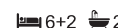
1. 9,6m x 10m / 31ft x 33ft



2. 9,6m x 10m / 31ft x 33ft



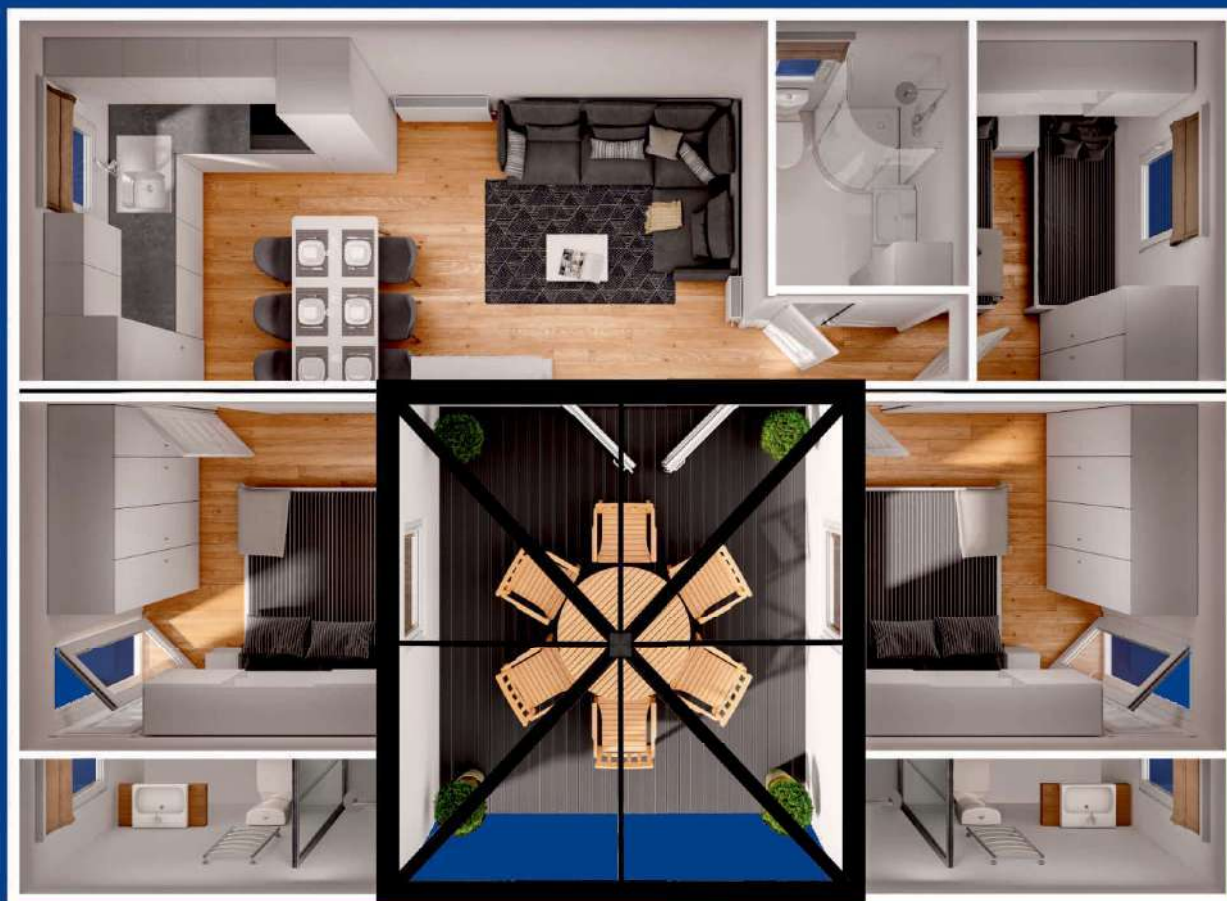
3. 9,6m x 10m / 31ft x 33ft





Yes, it's still a mobile home

The ability to combine individual elements of the house allows you to create unusual forms. Each part of the house has its own, independent chassis, making it easier than ever to drive the house onto the plot.



1. 9,6m x 7m / 31ft x 23ft

6+2 3





"Level UP!"

Combining two modules in the shape of the letter L allowed maximum use of space, so you can get the impression that this is a much larger house. With as many as 3 pairs of huge sliding doors, the interior of the home opens up to the outdoors on warm days.

1. 10m x 10m / 33ft x 33ft

4+2 2





Stylish elegant

An elegant and at the same time extremely practical apartment. Outside, a simple, modern line perfectly harmonizes with wood elements, informing about its prestigious character. The interior is all about thoughtful space. A wide passageway connects a spacious living room and a cozy and comfortable bedroom.



1. 10m x 4m / 33ft x 13ft

2+2 1



2. 12,3m x 4m / 40ft x 13ft

2+2 1





G-SPOT



Prestigious dandy

Another project inspired by the style of a modern barn, full of stylish accessories. A wide corridor with a kitchenette leads us from the entrance door to the living room, which allows you to keep maximum space in the living area. Terrace doors are used in the living room and bedroom, which allows you to enjoy the outside space at any time.



1. 12m x 4m / 39ft x 13ft

4+2 1



2. 12,5m x 4m / 41ft x 13ft

6+2 1





Apartment in a modern style

An elegant apartment characteristic for its external stylistic details and a covered terrace. Inside, there is a spacious bedroom and a living room, which makes it an ideal house for two.



1. 12m x 4m / 39ft x 13ft

2+2 1





More than just a mobile home

A design in which the area of an additional bedroom becomes important, and in the company of a spacious master bedroom and a living room, it gives the impression of a full-size apartment.



1. 9m x 3,74m / 29ft x 12ft  4+2  1





A space full of light

Hollum offers many configuration options, but the main feature of this project will be the space in the living room and the enormity of light that comes through 2 patio doors. The kitchenette gently goes beyond the living room area, allowing you to get even more space for the everyday rest.



1. 12m x 4m / 39ft x 13ft

4+2 1



2. 12m x 4m / 39ft x 13ft

6+2 1



3. 12m x 4m / 39ft x 13ft

4+2 1



4. 11,2m x 4m / 37ft x 13ft

4+2 1



5. 10,4m x 4m / 34ft x 13ft

4+2 1





Deep breath with a beautiful view

The project is created towards wonderful landscapes. The terrace will allow you to enjoy a beautiful view every morning. The layout of the rooms is another advantage of the Hollum model. The corridor leading to the living room, two bedrooms and a separate toilet is a combination that will appeal to everyone.



1. 12m x 4m / 39ft x 13ft

4+2 1





Madera Terrace 1



Coffee in the open air

An integrated, covered terrace that will allow you to enjoy relaxation in the fresh air is what distinguishes the Madera house collection. Inside you will find everything necessary. The layout of the rooms has been planned in a thoughtful and practical form.



Madera Terrace 2



1. 12,5m x 4m / 41ft x 13ft

4+2 1



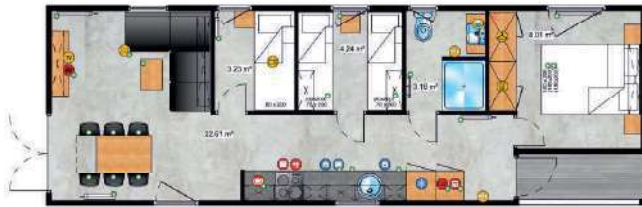
2. 12m x 4m / 39ft x 13ft

4+2 1



3. 12m x 4m / 39ft x 13ft

6+2 1



4. 11,2m x 4m / 37ft x 13ft

4+2 1



5. 10,4m x 4m / 34ft x 13ft

4+2 1





Surprisingly, thought out

A House made in modular technology is distinguished by the precision of the proper use of the usable space. A living room with a kitchen, two big bedrooms and a bathroom with a big shower cabin on an area of 30 m² is a challenge for every architect.





1. 10m x 4,2m / 33ft x 14ft

4+2 1



2. 10m x 4,2m / 33ft x 14ft

4+2 1



3. 8,7m x 4,2m / 29ft x 14ft

4+2 1



4. 8,2m x 4,2m / 27ft x 14ft

4+2 1



5. 8,2m x 4,2m / 27ft x 14ft

4+2 1



6. 8,2m x 4,2m / 27ft x 14ft

4+2 1



7. 7,5m x 4,2m / 25ft x 14ft

4+2 1



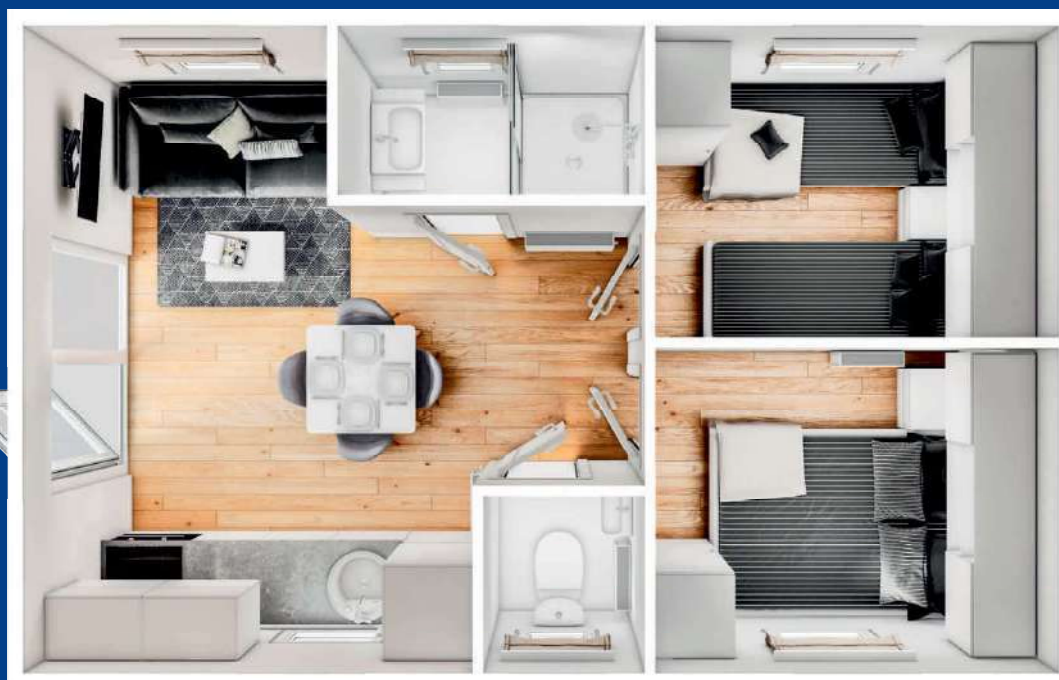






A little hero of great opportunities

A family house that only looks small from the outside. The interior of the Lazur model often covers more than houses of much larger sizes. It has 3 functional rooms, and to improve the convenience of everyday use, the bathroom and toilet are two separate rooms.



1. 6,6m x 4,2m / 22ft x 14ft 🛏️ 4 🚿 1



2. 6,6m x 4,2m / 22ft x 14ft 🛏️ 4 🚿 1



3. 6,6m x 4m / 22ft x 13ft 🛏️ 4 🚿 1



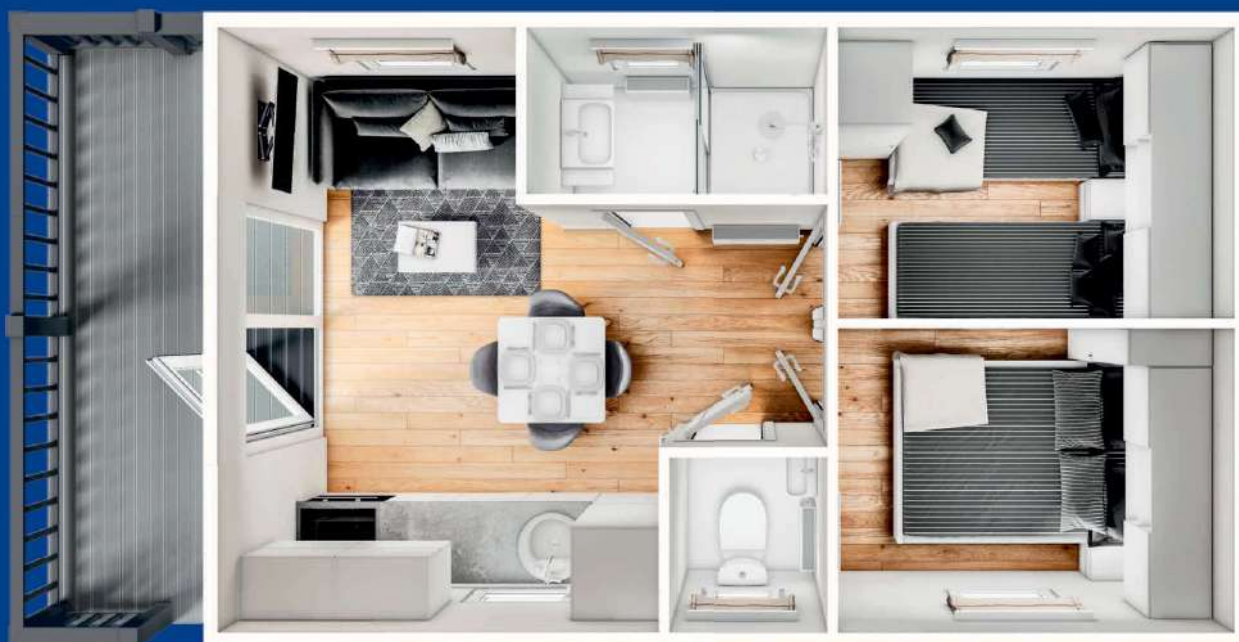
4. 6,6m x 4m / 22ft x 13ft 🛏️ 4 🚿 1





All in one

Another house proposal with an integrated terrace. The layout of the rooms looks more like a small apartment than a house on wheels. A person's toilet will also be a big advantage. Lazur is a small project that offers a lot of possibilities.




1. 8,5m x 4,2m / 28ft x 14ft  4  1





2. 8,5m x 4,2m / 28ft x 14ft  4  1



3. 8,5m x 4m / 28ft x 13ft  4  1



4. 8,5m x 4m / 28ft x 13ft  4  1







Area used up to the maximum

A design that is distinguished primarily by the number of bedrooms. 8 people can comfortably use 4 bedrooms, and for even greater convenience, the residents get 2 bathrooms with separate toilets. A centrally located living room with large glazing gives you the opportunity to enjoy the beautiful view outside the window.



1. 12m x 4m / 40ft x 13ft

 8+2  2





Surprisingly different

On one hand a covered porch welcomes guests and protects them from rain. On the other hand, the interiors are a unique layout of rooms, modeled on an apartment with two bedrooms and a living room. The advantage will be a separate bathroom with a toilet.



1. 8,8m x 4m / 29ft x 13ft  4+2  1





LARK Saint Malo



1. 10,4m x 4m / 34ft x 13ft

6+2 2



LARK Saint Laurent



1. 9,2m x 3,74m / 30ft x 12ft

4+2 1





Sainte Marie Senior Lux



1. 10,4m x 3,74m / 34ft x 12ft

🛏️ 4+2 🚻 1



Saint Raphael



1. 8,8m x 4m / 29ft x 13ft

🛏️ 4+2 🚻 1





LARK Saint Lazare



1. 10m x 4m / 33ft x 13ft  6+2  1



LARK Sainte Marie Senior



1. 8,4m x 4m / 28ft x 13ft  4+2  1





LARK Saint Nazareth



1. 9,6m x 4m / 31ft x 13ft

🛏 6+2 🚻 1



LARK Saint Marc



1. 8m x 4m / 26ft x 13ft

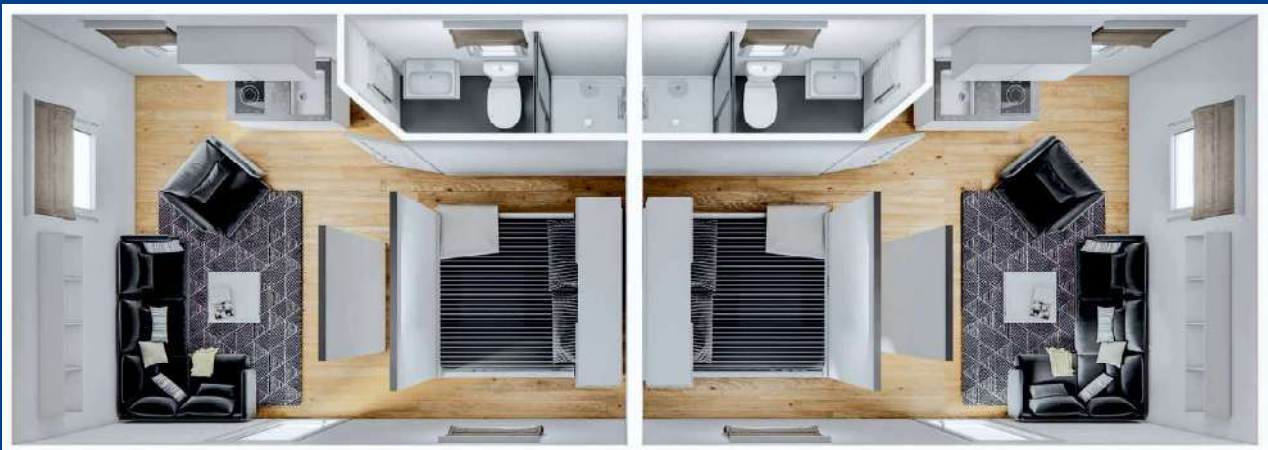
🛏 4+2 🚻 1






2 times more benefits

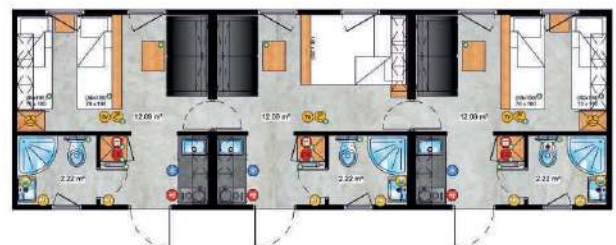
Hotel Solution is an excellent proposition addressed to accommodation bases such as camping parks, holiday resorts or even hotels. Two independent, exclusive apartments in one module at the same time provide a comfortable accommodation for two families, without taking up too much space on the premises.



1. 12m x 4m / 39ft x 13ft  6  3



2. 12m x 4m / 39ft x 13ft  6  3



3. 12m x 4m / 39ft x 13ft  6  3



4. 12m x 4m / 39ft x 13ft  8+2  2



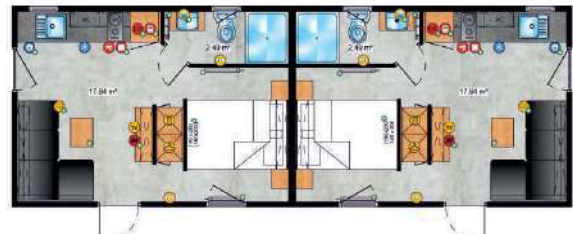
5. 12m x 3,74m / 39ft x 12ft

4+4 2



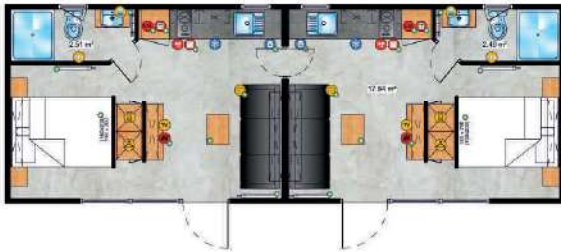
6. 11,2m x 4m / 37ft x 13ft

4+4 2



7. 11,2m x 4m / 37ft x 13ft

4+4 2



8. 11m x 4m / 36ft x 13ft

4 2



9. 11m x 4m / 36ft x 13ft

4 2



10. 9,6m x 4m / 31ft x 13ft

4+4 2



11. 9,6m x 4m / 31ft x 13ft

4+4 2



12. 9,6m x 3,74m / 31ft x 12ft

4 2



13. 8m x 4m / 26ft x 13ft

4 2



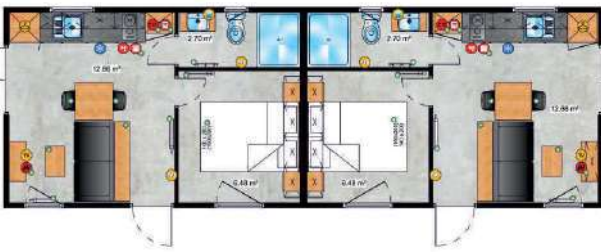
14. 12m x 4m / 39ft x 13ft

3 3



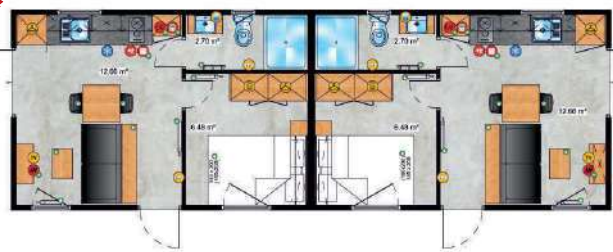
15. 12m x 4m / 39ft x 13ft

4 2



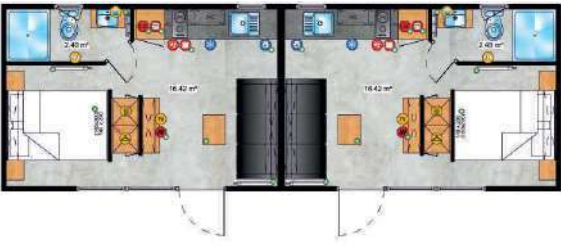
16. 12m x 4m / 39ft x 13ft

4 2



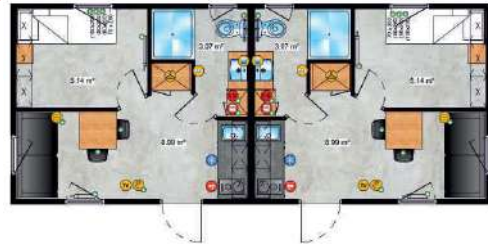
17. 11,2m x 3,74m / 37ft x 12ft

4 2

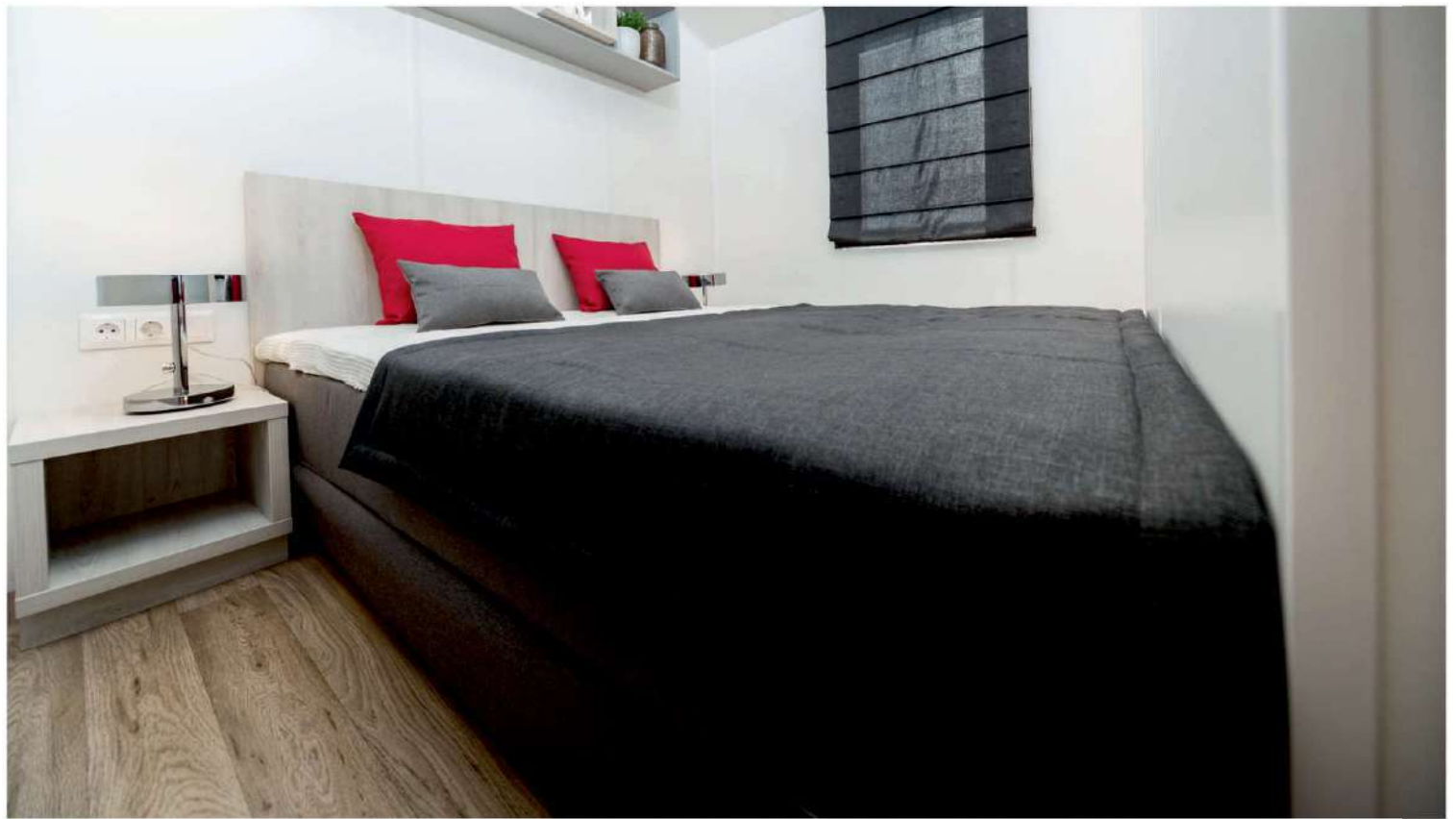


18. 9,6m x 4m / 31ft x 13ft

2+4 2











Perfect for business

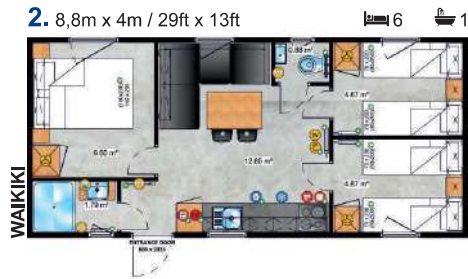
The offer of houses is aimed at camping parks, but also individual recipients. A well-thought-out form, dressed in high-class materials, allows the houses from the Camping Solution collection to stand out from other houses.



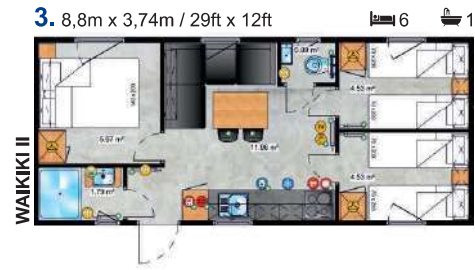
1. 8m x 3,74m / 26ft x 12ft  5  1



2. 8,8m x 4m / 29ft x 13ft



3. 8,8m x 3,74m / 29ft x 12ft



4. 8m x 3m / 26ft x 10ft



5. 8m x 3m / 26ft x 10ft











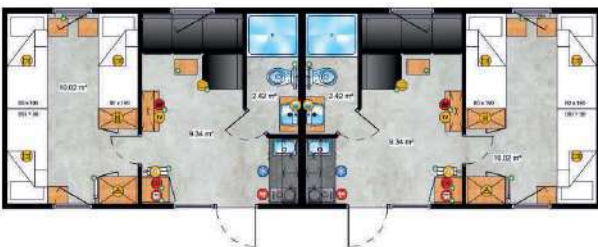
2 in 1

The Tourist Formula is intended mainly for the needs of expanding the accommodation base of tourist facilities. This solution will find its application perfectly in seaside resorts or near lakes. One module houses two independent apartments, allowing you to accommodate two families at the same time. Each family has its own spacious bathroom and a fully equipped kitchenette, all in the highest finishing standards. In short, such a solution has "double benefits".





1. 12m x 4m / 39ft x 13ft

 12+4  2





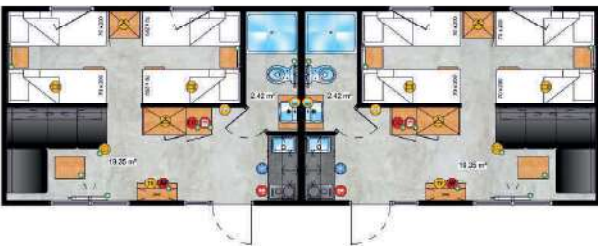
2. 12m x 4m / 39ft x 13ft

 8+4  2





3. 12m x 4m / 39ft x 13ft

 12+4  2





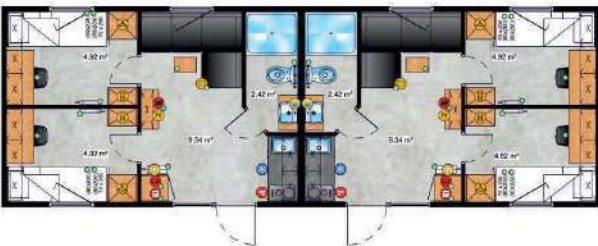
4. 12m x 4m / 39ft x 13ft

 8+4  2



5. 12m x 4m / 39ft x 13ft

 4+4  2









More business opportunities

The Mobile Office series offers a completely new direction and business opportunities. Now you can run your business where you need it. There are many applications for the Mobile Office module. Additionally, the client can configure office workstations according to his needs. Attention to detail and quality of workmanship make the mobile office look great from the very entrance, and the modern design on the outside will focus and attract everyone's attention.



1. 11,5m x 4,09m / 38ft x 13ft

5 1



2. 11,2m x 4m / 37ft x 13ft

4 1



3. 11,2m x 3,74m / 37ft x 12ft

4 1



4. 11,2m x 3,74m / 37ft x 12ft

3 1



5. 10,4m x 3,74m / 34ft x 12ft

2 1



6. 9,6m x 3,74m / 31ft x 12ft

4 1



NEW
MODEL

7. 11,2m x 4m / 37ft x 13ft

2 2+2 1



NEW
MODEL

8. 10m x 3,4m / 33ft x 11ft

2 2+2 1



NEW
MODEL

9. 11,2m x 4m / 37ft x 13ft

4 1



NEW
MODEL

10. 12,3m x 4,3m / 40ft x 14ft

4 1



NEW
MODEL

11. 12,3m x 4,3m / 40ft x 14ft

5 1



NEW
MODEL

12. 12,3m x 4,3m / 40ft x 14ft

3 1



NEW
MODEL

13. 12,3m x 4,3m / 40ft x 14ft

3 1









Meeting Room

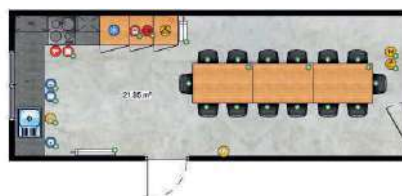


Mobile conference center

Comprehensively, Lark's offer behind the collection of offices has been expanded to include houses intended for conference rooms, training rooms or science classes. There are as many applications for a Meetingroom as there are needs. The possibility of personalizing the equipment allows the facility to be adapted to all needs.



1. 8m x 3m / 26ft x 10ft

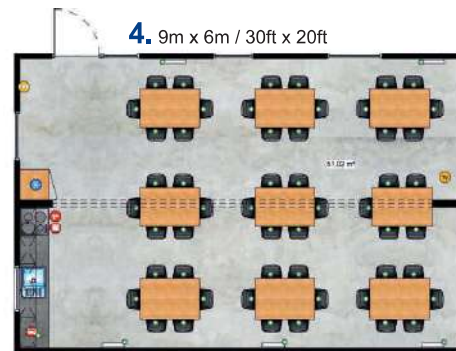
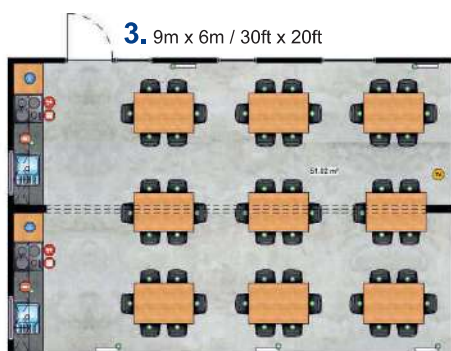
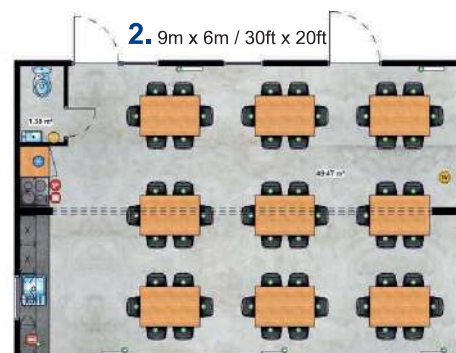
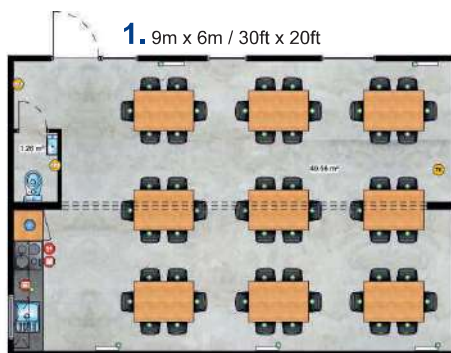






Eating together gives you a boost

The Cantine complex is intended for places where there is not enough space for catering facilities: workplaces, campuses, dormitories. It will also be perfect as a restaurant or entertainment base.





Normobaric chamber



Because health is the most important thing

Normobaric - the state of atmospheric pressure most conducive to human health and longevity, amounting to approx. 1500 hPa. The Normobaric Chamber is a good way to support physical condition, the body's immunity and improve overall well-being and health.

1. 10m x 3,4m / 33ft x 11ft



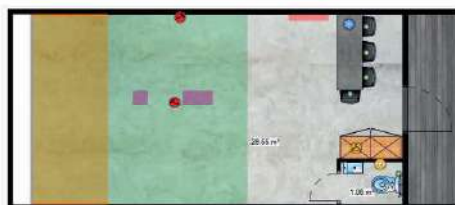


The largest golf courses on an area of 30m²

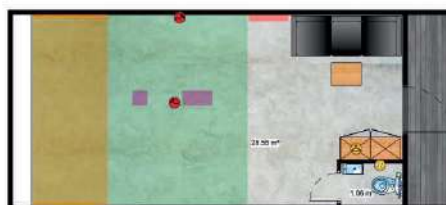
Out of passion for sport, we have developed a modern solution that will satisfy even the most ardent golf enthusiasts. Advanced technology allowed us to develop the sense of realism practically to the maximum. Regardless of the weather conditions, compete with your friends and discover the joy of golf.



1. 9m x 4m / 30ft x 13ft



2. 9m x 4m / 30ft x 13ft



STANDARD EQUIPMENT

Roofing:

- gable roof: metal roofing tile
- sloped roof: metal roofing tile
- flat roof: EPDM membrane

Wind girder: a PVC wind girder is installed on the front wall, and a metal wind girder on the rear wall

Window and door joinery: a double glazed, 5-chamber system

Guttering: elements made of PVC are characterized by low weight, resistance to weather conditions,

Chassis: steel, fire galvanized, with a load capacity up to 12 tons

External hermetic electrical socket

The drawbar (ball hitch) allows you to tow the house from both sides - front and rear)

Wheels: Two axles placed centrally under the chassis make it very easy to maneuver the house while setting it up on the plot

A door blocking system is mounted to each type of external doors at our Lark houses



IMPORTANT :

The basic (factory) price refers to a house in a standard specific. Outside, at the basic price, the customer receives:

- Fire galvanized steel chassis with a set of 4 wheels
- Kerrafront Classic White FS-202 facade
- Guttering - white color
- Window frames in white inside / white outside
- Metal roofing tile - white color
- 1x LED and 1x hermetic socket

EXTRA EQUIPMENT:

Outside:

- Set of supports
- Kerrafront Classic cladding
- Kerrafront Trend cladding
- Kerrafront Modern Wood cladding
- Kerrafront Wood Design cladding
- Natural Siberian larch cladding
- Anthracite-colored windows on the outside
- LED light point / pc.
- Hermetic socket
- Mosquito net system

General:

- Design change
- Mirror reflection
- Electric heating + hot water (complete installation)
- Gas central heating (complete)
- Floor heating
- Dual-function air conditioning system 1 + 1
- Dual-function air conditioning system 1 + 2
- Dual-function air conditioning system 1 + 3
- Preparation for a photovoltaic system
- Additional electric socket
- Decorative LED strip 1 meter

Living room

- 1.6KW electric fireplace
- Folding table for 6 people
- Folded out sofa – sleeping function
- MP3 wireless sound system
- Dining chair / pc.

Kitchen

- Kitchen fronts White Acrylic (gloss)
- Dishwasher 45 cm
- Dishwasher 60 cm
- Washer dryer
- Integrated in furniture microwave oven
- Conglomerate sink
- Oven with microwave function

Bedroom

- 160x200 bed
- 180x200 bed
- 80x200 bed
- Murphy Bed
- TV point (complete)
- Upholstered headboards
- USB charger

Bathroom

- Flush-mounted toilet bowl
- Bidet
- Wall plate in a tile look
- Thermostatic faucet
- Handles for the disabled

Additional thermal insulation system



10 cm mineral wool in the floor



10 cm mineral wool in the roof



5 cm of mineral wool in the external walls



10 cm of mineral wool in the external walls



Thermo-reflective membrane in the floor



Thermo-reflective membrane in external walls



Thermo-reflective membrane in the roof



Thermoreflective PLUS membrane in the floor



Thermoreflective PLUS membrane in external walls



Thermoreflective PLUS membrane in the roof





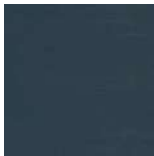
Tubular protection plate



The presented accessories are only a suggestion. We will be happy to discuss and implement the changes you care about. We listen to our clients's requirements and try to meet them. The satisfaction of our customers is our main task.

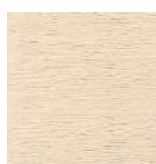
CLADDING

The cladding combines aesthetic and functional values. The cladding material is extremely durable and resistant to changing weather conditions, does not require regular maintenance, does not fade and does not deform under the influence of sunlight and temperature.

		WOOD EFFECT : colour range			
FS-304					
		alpine oak	caramel oak	concrete oak	malt oak
		MODERN WOOD : colour range			
FS-304					
		anthracite	beige	claystone	ivory
FS-302					
		pearl grey	quartz grey	white	
		TREND : colour range			
FS-301					
		soft anthracite	soft ivory	soft mastic	soft pearl grey
					
		stone anthracite	stone ivory	stone mastic	stone pearl grey
		CLASSIC : colour range			
FS-202					
		anthracite	beige	claystone	cream
FS-201					
		grey	light grey	olive	quartz grey
					
		white			

FS-202

RETRO : colour range



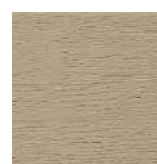
beige



blue



cream



sand



Wood-based structure



Guarantee



Latest Technology



Moisture resistant



Durability, impact strength



Lightweight which facilitate installation and does not burden construction



Quick installation



Facade ventilation



Ideal cover of the façade insulation



Pests resistant



No painting or maintenance required



Easy to clean

SVP collection

It is a perfect solution for the facade of mobile homes. It looks great, lasts years and the most important it is resistant to changing weather conditions. SVP collection does not require additional care and refreshing throughout its service life. SVP cladding is dedicated to Luxury Budget models.

NATURE : colour range



silver cedar



swamp oak



winchester oak



golden oak

UNICOLOR : colour range

SV(P)-05



SV(P)-01



SV(P)-01 / SV(P)-05



beige

SV(P)-01 / SV(P)-05



white

SV(P)-01 / SV(P)-05



light grey

SV(P)-01



light green

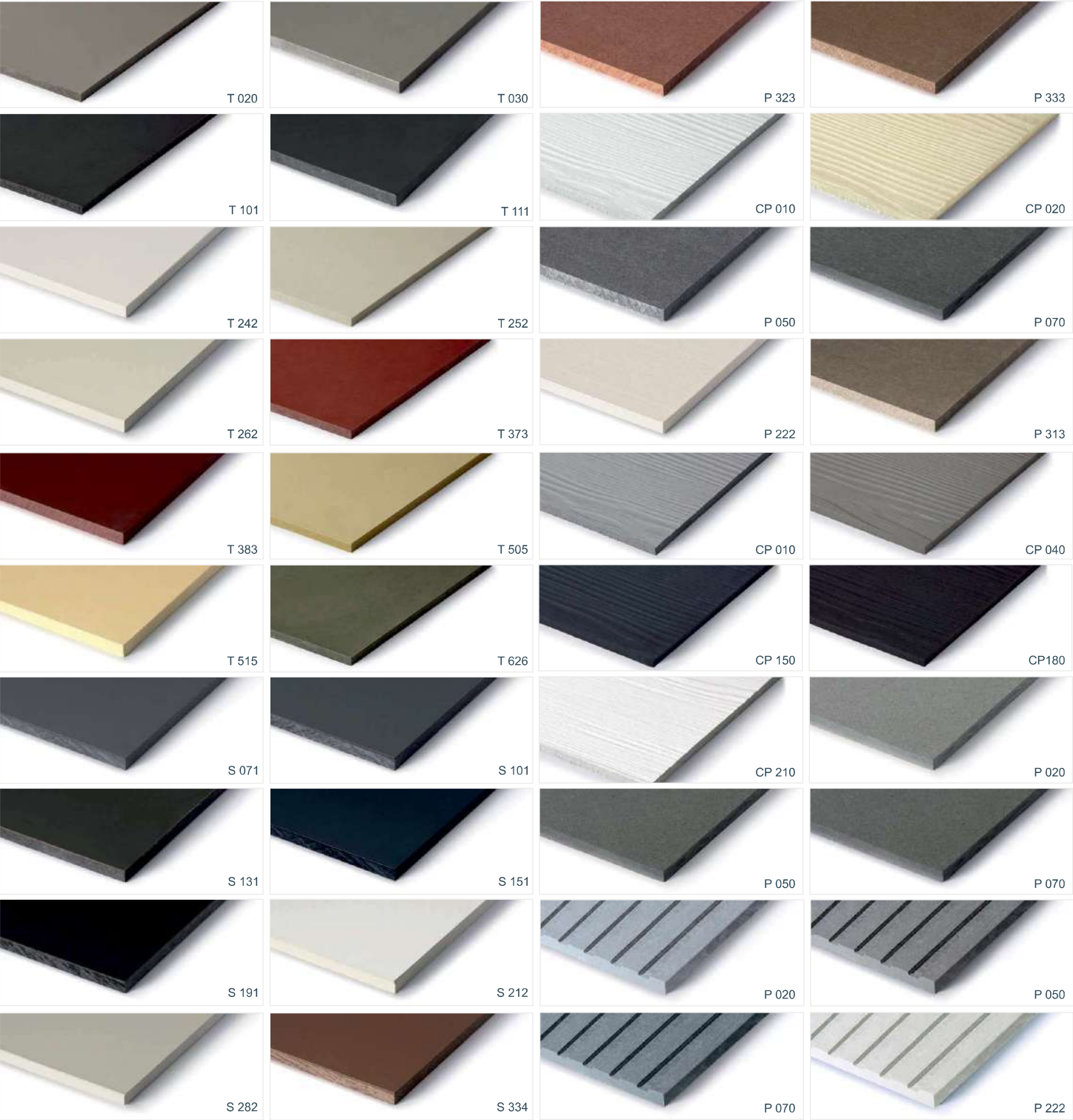
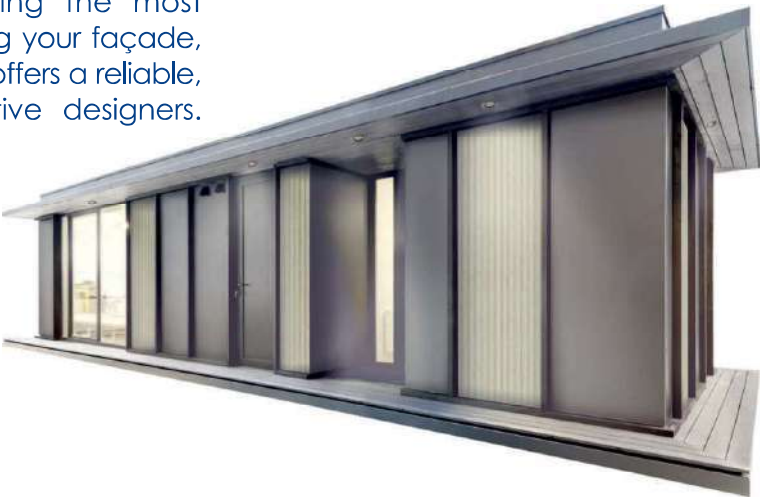
SV(P)-01 / SV(P)-05



creamy

Cembrit Solid is a range of 18 intense colours with matching surface and base board colour. Incorporating the most popular shades with some accents for highlighting your façade, Cembrit Solid rear ventilated rainscreen cladding offers a reliable, long lasting rainscreen with choice for creative designers. It will never let you down.

Cembrit Solid literally has you covered to the core. With this board, a word is a word. A colour is a colour. And solid means solid. It is the colourful edge to your building design and provides a calm expression from every angle thanks to its through-coloured qualities. Small scratches and marks will remain practically invisible as the year's pass – maintaining its strong, but the subtle expression and living up to its name every single day.



ZIERER - Textured panels resemble a hammer-dressed slate surface. Their geometric form allows them to be used anywhere, because the vertical joints can be either aligned or offset. But whether aligned or offset, the result is always harmonious.



TERRA



red



stone gray



anthracite



sandstone



pastel gray

WOOD STRUCTURE



anthracite



white



sand



brown

CLINKER STRUCTURE



yellow



red



white



green



sweden red



stone gray



signal gray

EBONY



ebony agate



ebony slate



ebony granite



ebony limestone



ebony marble

OAK



caramel oak



black oak



rhinstone oak



slate oak



carbon oak



marble oak



ceramic oak

Rockpanel Woods



Facade panels that give a fresh and exclusive look. They work great as a decorative element in combination with the classic Kerrafront.

NATURAL CLADDING

Siberian larch is a wood with small annual increments, extremely durable. It is characterized by considerable natural resistance to the destructive effects of mold, fungi and adverse weather conditions, as well as high mechanical strength.



Thermory Ash



Thermory Pine



Thermory Spruce



Thermory Clear Pine















CLASSIC LOOK AND MODERN FORM

Standing seam roof panels is a solution drawing on the traditional roofing method "on the rabbit", in which tongue-and-groove panels are fitted together. The need for innovation lead Blachotrapez to design the product in such a way that it features a number of improvements - a Retro roof panel with a standing seam. Functionality, speed, and simplicity of assembly were combined with the unique appearance of the product that meets the best standards of aesthetics.

ROOF STEEL TILES

Aesthetic and modern roofing panel available in many unique colours. Thanks to this, each house has its own unique character.

Metal roofing sheet is profiled from double-sided galvanized sheet and coated with several layers of varnish, which guarantees its longevity.

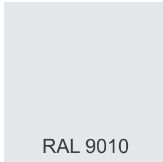

light grey	grey	silver metallic	graphite	graphite	black	dark brown	brown	brick	cherry	silver	white
											
RAL 7035	RAL 7000	RAL 9007	RAL 7016	RAL 7024	RAL 9005	RR 032	RAL 8017	RAL 8004	RR 028	RAL 9006	RAL 9002



For models with a flat roof, we use EPDM membrane, which ensures full water resistance and several decades of durability, even in extremely difficult conditions.

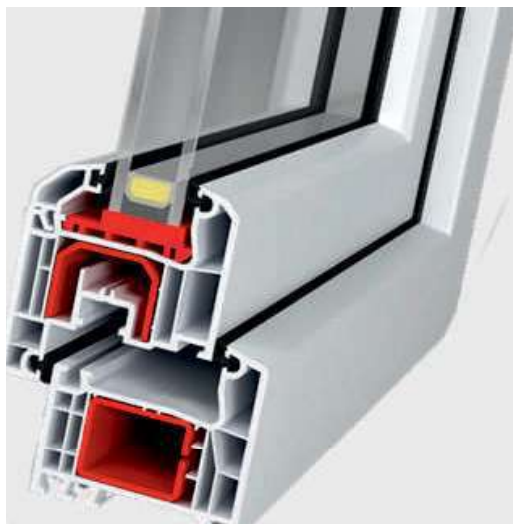


Bargeboards used in Lark houses are characterized by high durability and resistance to weather conditions and UV rays.

	white
RAL 9010	
	graphite
RAL 7016	



WINDOWS



The multi-chamber construction provides high thermal and acoustic insulation.

- Increased mechanical strength while maintaining transparency and shape after shattering;
- Lack of dangerous fragments when breaking glass;
- Resistance to the effects of force burglary;
- 5-chamber design and embedding depth of 70mm provide optimal thermal and acoustic insulation (up to $UV = 1.1 \text{ W/m}^2\text{K}$);
- Improvement of acoustic insulation in combination with thermal insulation glass;
- Using PVB film, it is possible to limit ultraviolet radiation.
- A large chamber for reinforcement guarantees proper statics
- Esthetic and invisible glazing gaskets
- The 15-degree frame and sash edge bevel ensures optimal water drainage
- 13 mm offset of the fittings groove axis from the edge of the frame makes it possible to use wider keeps and thus increases its anti-burglary resistance
- Extremely durable and modern gaskets ensure the windows are tight and reliable
- In accordance to EN 1647 we Use safety glass;



white - standard



golden oak



anthracite

GUTTER SYSTEM

The elements made of PVC are characterized by low weight, resistance to weather conditions, color durability confirmed by laboratory testing and aging tests performed in accordance with the requirements of the following standards: **PN-EN 607: 2005, PN-EN 1462: 2005, PN-EN 12200-1: 2002.**



WHITE / RAL 9010



BROWN / RAL 8017



RED / RAL 3011



BRICK / RAL 8004

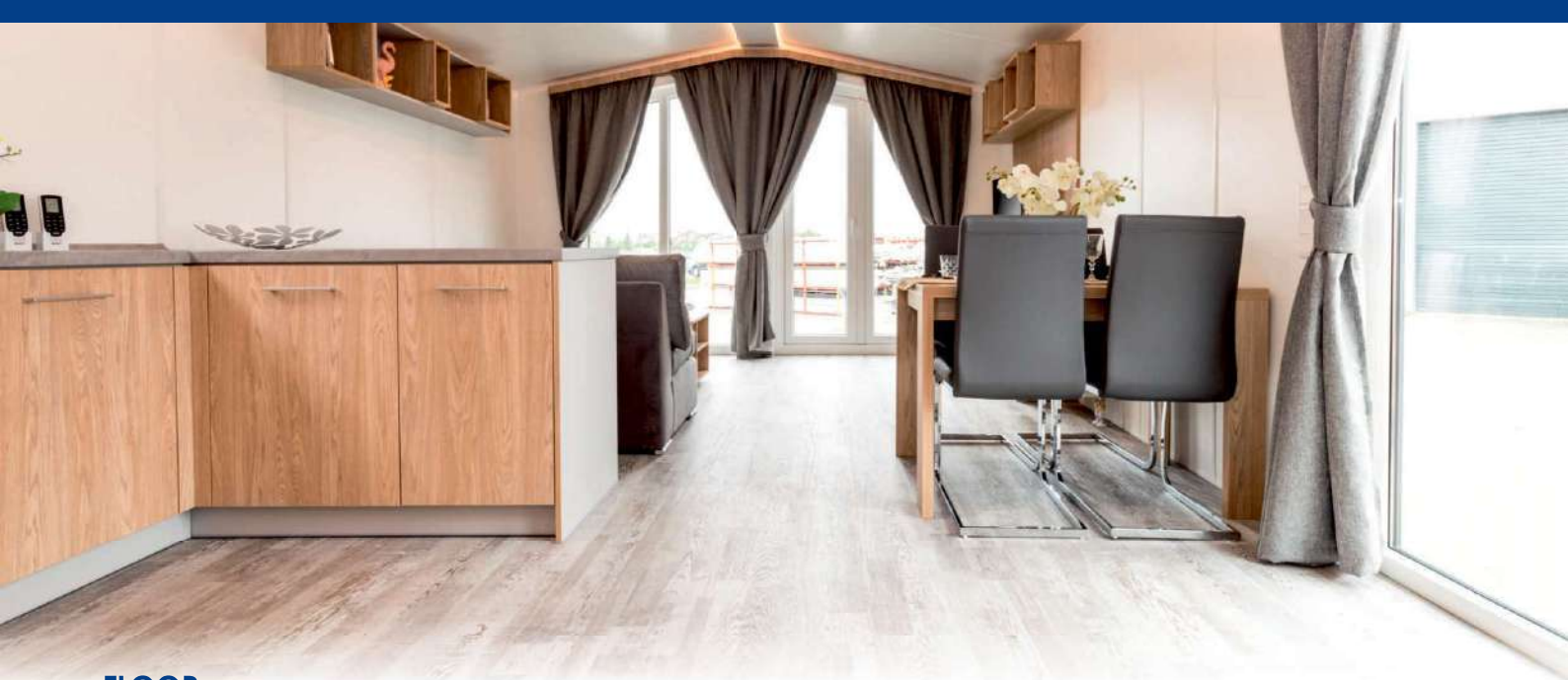


GRAPHITE / RAL 7021



BLACK / RAL 9005





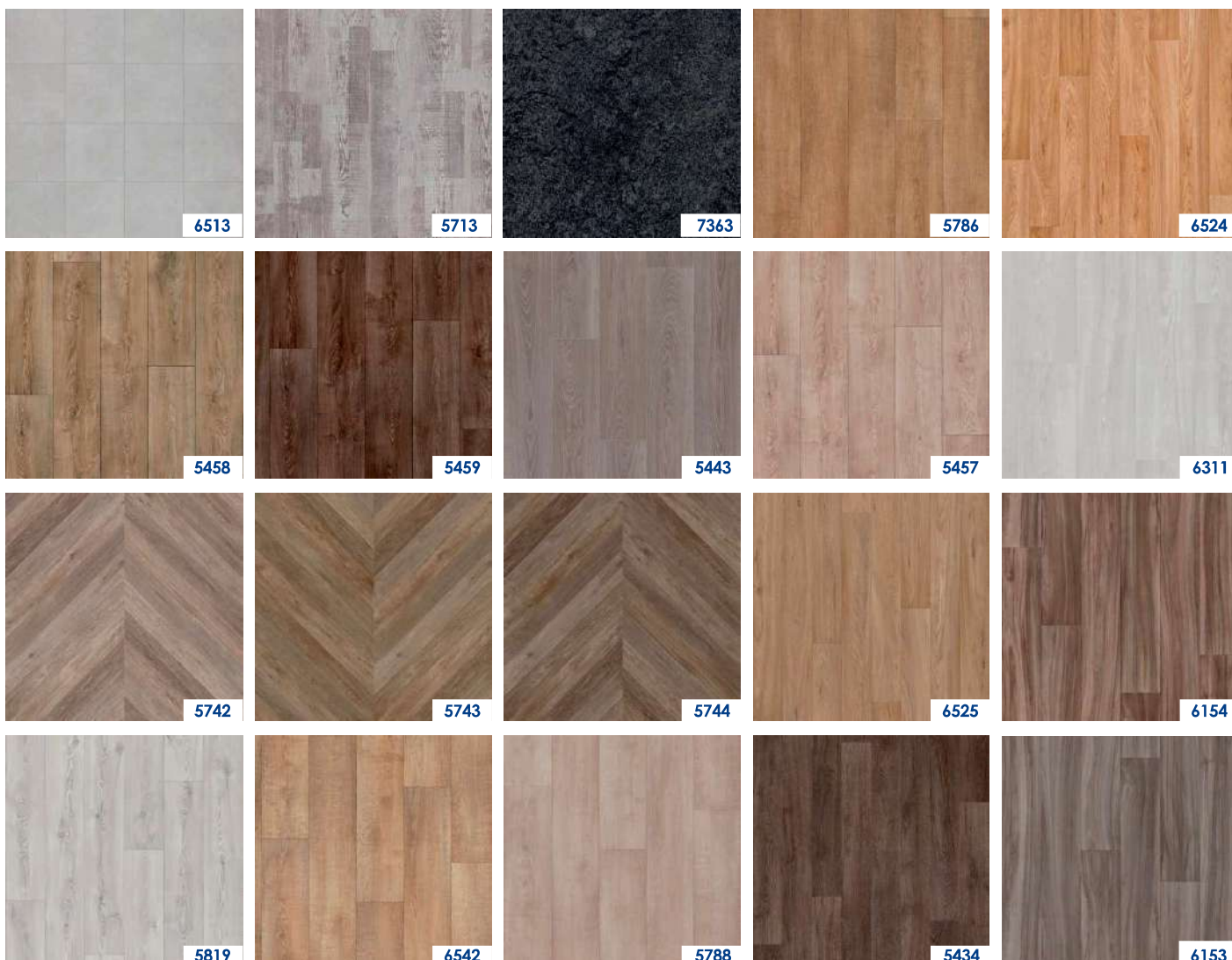
FLOOR

Wood, stone and ceramic patterns in a modern interpretation that will fit into any room of the house. Coziness, sound absorption and comfort underfoot - that's what floorings used in Lark homes provide



- Distinctive, smooth and matt surface
- Long-lasting protection
- High resistance to scores and scratches
- Easy care
- Higher abrasion resistance

Noviclean is a protection for the surface layer, which provides resistance to scratches, facilitates care and protects against dirt and chemicals.



VINYL PANELS

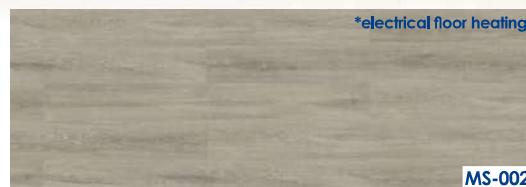
The SPC Luxor vinyl panels are a high-quality flooring system dedicated to residential and utility spaces. The panels are characterized by excellent performance parameters, including:

- high abrasion class, thanks to which the floor does not wear off even with intensive use,
- high dimensional stability enabling aesthetic arrangement of panels on the floor,
- high resistance to damage resulting from the use of chairs on castors and cabinets on wheels,
- high flexibility, which prevents the panels from cracking and chipping, which translates into increased durability of the floor system.

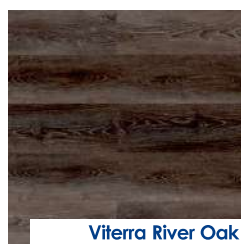
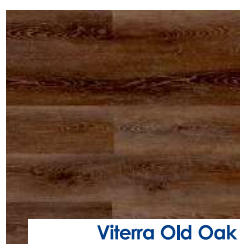
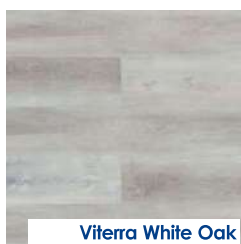
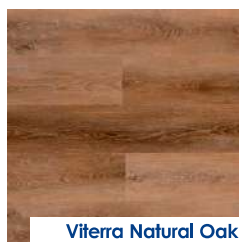
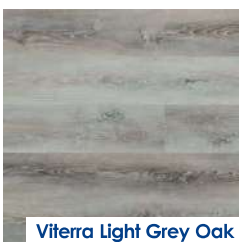
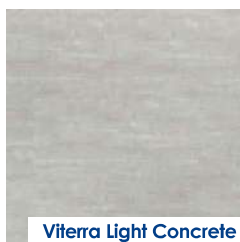
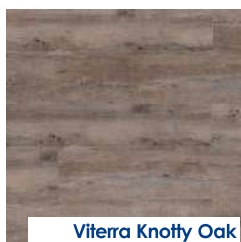
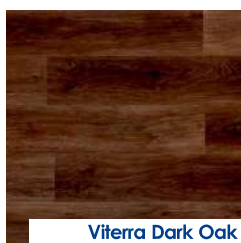
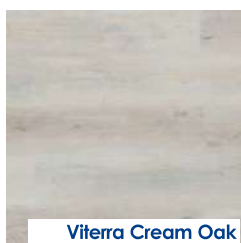
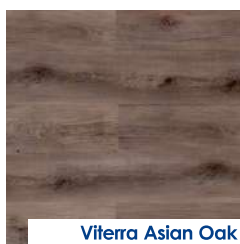
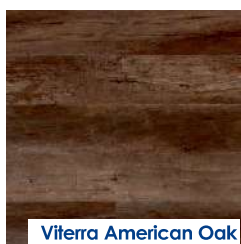
The high abrasion class and flexibility of vinyl panels make the offered floor very well suited to kitchens and bathrooms, as well as in common spaces of office or service facilities - wherever the floor is exposed to the harmful effects of moisture or wet pollution. *Used for electrical floor heating.



Luxor collection



Viterra collection



FURNITURE

Furniture in Lark mobile homes is made with incredible accuracy and great care for the finest of details. All thanks to our own furniture factory, that produces high class cabinets every day.



Look for your own comfort and arrange your unique home space

BODY



Gray U540



Toffi



White

FRONTS



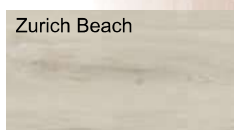
Light Palermo Oak

D2609PR



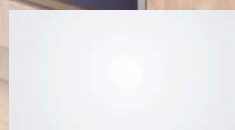
New York Oak

D3823OW

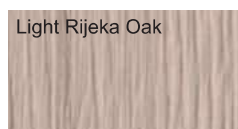


Zurich Beach

D3807OW

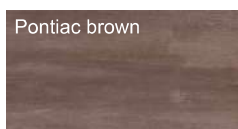


WHITE GLOSS



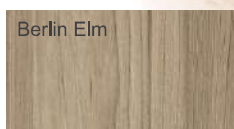
Light Rijeka Oak

D3166MX



Pontiac brown

D4421 OV



Berlin Elm

D3192 SW



WHITE

ACRYLIC LAMINATE

Acrylic laminate is characterized by a perfectly uniform surface, the modern design of which fits perfectly with today's kitchen trends. The smooth surface will give the interior a character of freshness, elegance and harmony. Thanks to its neutrality, it will become an excellent basis for arranging a kitchen in many styles, from which we can choose the one that best suits our tastes.



Bianco



Neve



Meringa



Magnolia



Gabbiano metallic



Cubanite metallic



Titanio



Moro



Cappuccino



Prugna



Vino



Rame metallic



Cemento



Roccia



Grafite



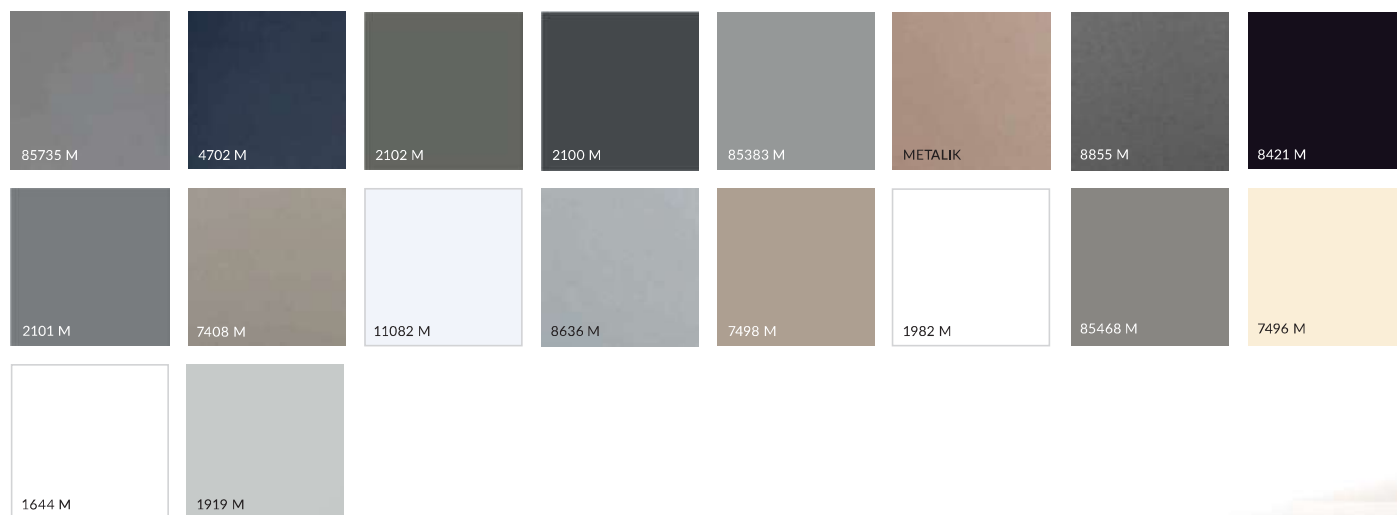
Bigio metallic

AKRYL PREMIUM X

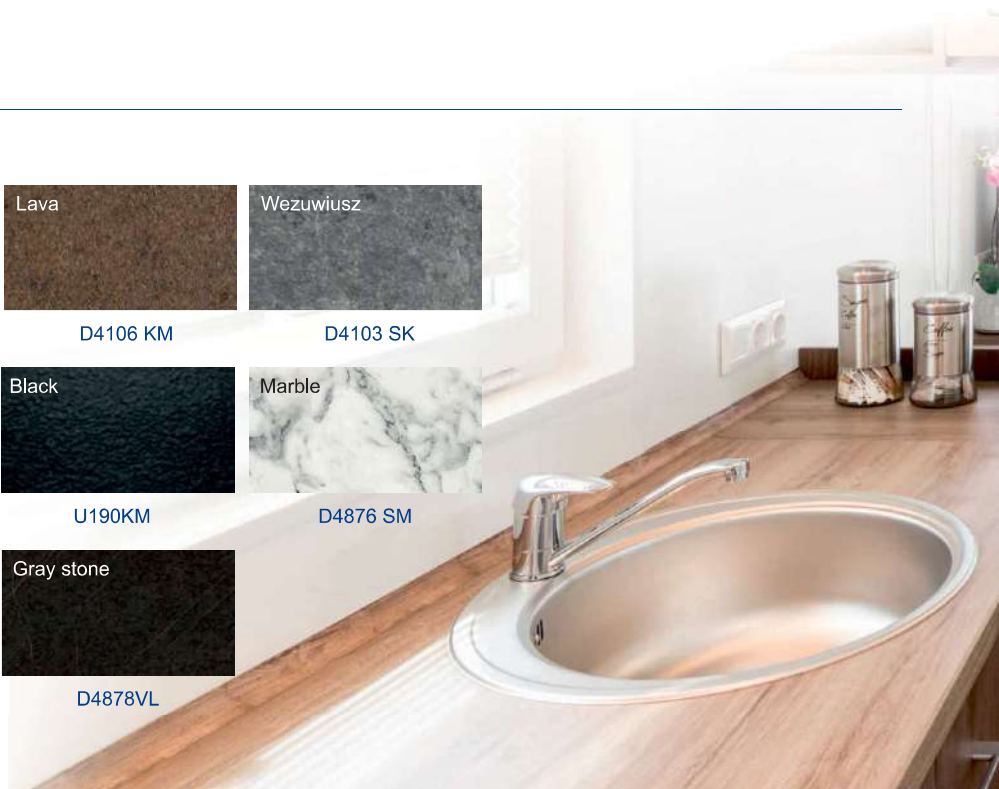
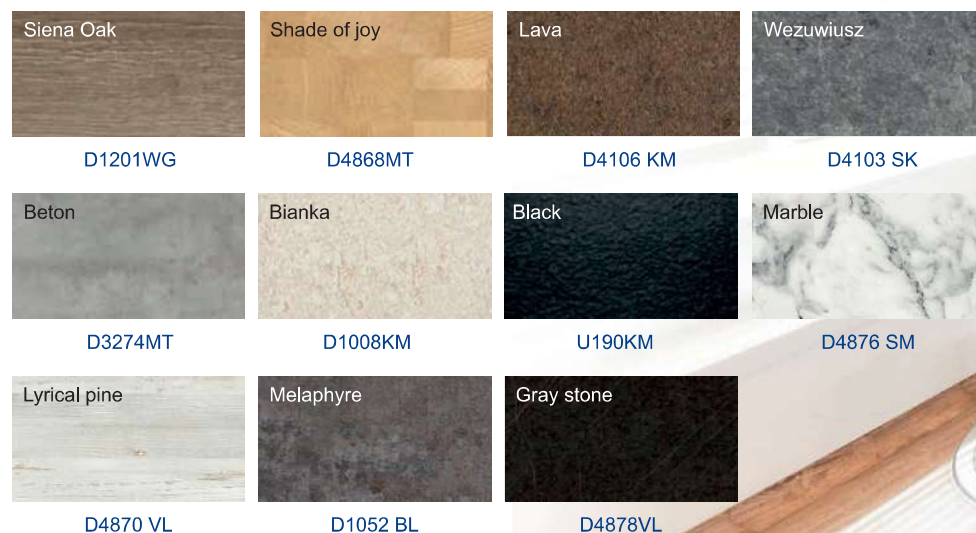
High-gloss front panels on MDF board, with increased scratch, UV and chemical strength.



AKRYL PREMIUM MAT



WORKTOPS



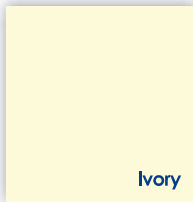
WALLS AND CEILING

The walls inside the Lark house are constructed of custom made 10mm thick boards, and the patented technology provides the following properties;

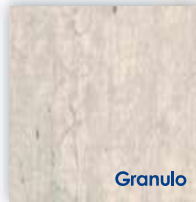
- The boards do not absorb moisture on both sides
- Resistant to scratches
- Easy to clean
- Does not discolour when exposed to UV rays



White



Ivory



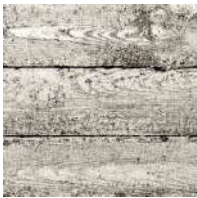
Granulo

Each interior has different possibilities. Each one can create an individual, inspiring atmosphere. Kerradeco is not only aesthetically pleasing but also has exceptional technical qualities. Kerradeco is non-flammable with enhanced sound insulation and also impact and moisture resistant.

WOOD LINE



Ash Wood



Concrete



Nord Wood Gold



Snowy Wood



Wood Brandy

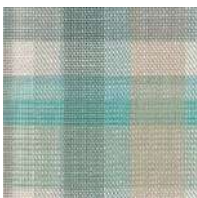


Wood Carbon



Wood Vintage

TEXTILE



Blue Tartan



Green Tartan



Retro Grey



Scotch



Tweed

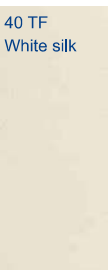
Agnes One-Step Wall is a foil covered wall panel. The panel has tongue and groove with a v-joint on the long sides. Forestia One-Step Wall is available in a number of decors.



02 TF
White
stucco



14 TFL
White
inspiration



40 TF
White silk



45 TF
White rustic



12 TF
White linnen



07 F
Antique white
hessian



08 F
White
hessian



14243
Light Textile



14244
Grey Textile



50 F
Bohemian
beige



55 F
Trendline



54 Trendline
Crystal White

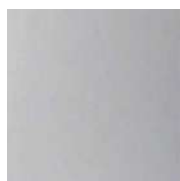
WALLS2PAINT

Walls2Paint is a panel format with a surface ready for painting. The panels create a uniform surface on the wall thanks to an ingenious connecting profile with a hidden fixing line. The panels can be painted in any color chosen by the user.



WALLS4YOU

High quality chipboard for walls with top quality stylish pre-applied wallpaper.
We have a wide selection of wallpapers.



14243 Light Textile



4147 White Deco



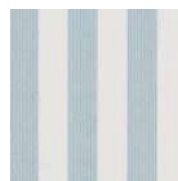
4150 Grey Deco



14213 Plain Offwhite



14214 Stripes Offwhite Beige



14217 Narrow Stripes Offwhite Blue



14218 Narrow Stripes Offwhite Beige



14244 Grey Textile



14219 Plain Light Beige



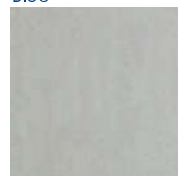
14221 Stripe Offwhite Pearl White



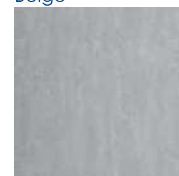
40590 Flow Plain Offwhite Concrete



40593 Flow Plain Blue Concrete



40597 Flow Plain Light Grey Concrete



40599 Flow Plain Dark Grey Concrete



41100 Bright Wood



10432 Winebox



10442 Winebox Light Grey



10452 Crusoe



10462 Rustic Oak



14232 Metallic Plain Black



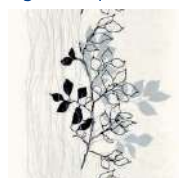
14238 Metallic Snow White



14240 Driftwood



40291 Verve Plain Uni



40391 Verve Silver Leaves



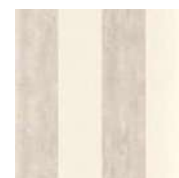
40900 Valentine



40901 Golden Square



41000 Wooden Stripe



40692 Flow Stripes Light Concrete

P7 BOARD

These melamine-coated wall panels ensure that your walls are NOT easily damaged. The wall panels also have a moisture-resistant core which has been tried and tested for over 40 years. They are now equipped with a LOCKING PROFILE

- Strong, solid wall panels
- Smooth, hard surface
- Easy to clean
- Approved for climate class 2
- Hidden fastening



FINISHING BOARD

The high-quality, particularly stable finishing board has fundamentally changed the entire drywall construction industry and thus made the fermacell brand big and strong. Today, fermacell gypsum fibre boards and the water- and weather-resistant Powerpanel H2O boards stand for fast and economical expansion concepts for all areas of interior construction.



MDF WALL PANELS

MDF Panels are decorative pieces that are placed on walls to give them the desired texture, pattern, or architectural look.

Wall Image

Standard



5363



5364



5445



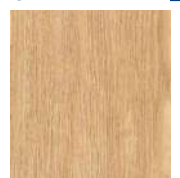
5446



5447



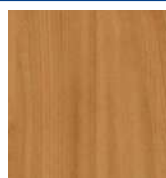
9087



1801



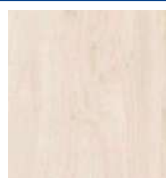
1814



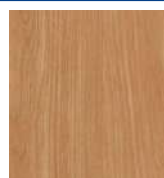
1820



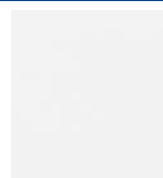
1825



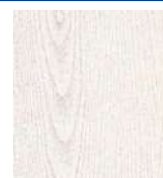
1827



1828



1834



9008

WALL PANELS

System of wall panels imitating ceramic tiles. Thanksto their properties, they are perfect for bathrooms, giving them a fresh and modern style.

Denver White

Ivory

Milano Antrasite

Toscana

White Silk

White Slate

ELEGANT SOLUTIONS FOR BEAUTIFUL INTERIORS

PVC panels for walls and ceilings

travertine matt

travertine gloss

marble black

marble white

marble gray

marble beige

concrete matt

concrete gloss

conglomerate white

diamond black

brick beige

brick gray

slate graphite

classic white

The use of heating in the Lark mobile home will definitely improve its thermal parameters and will extend the season of use. Autumn evenings will be as pleasant as those in the middle of summer.

GAS CENTRAL HEATING



ELECTRIC HEATING



ROLLER BLINDS AND CURTAINS

You can choose from over 50 colours to make yourself feel at home!



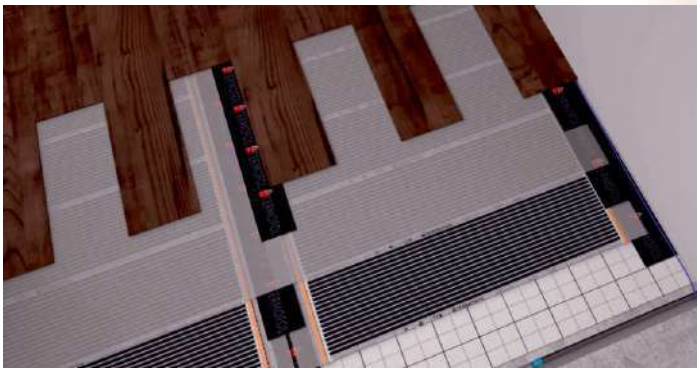
UPHOLSTERY

You can choose from over 90 colours! Here are some customer favourites:

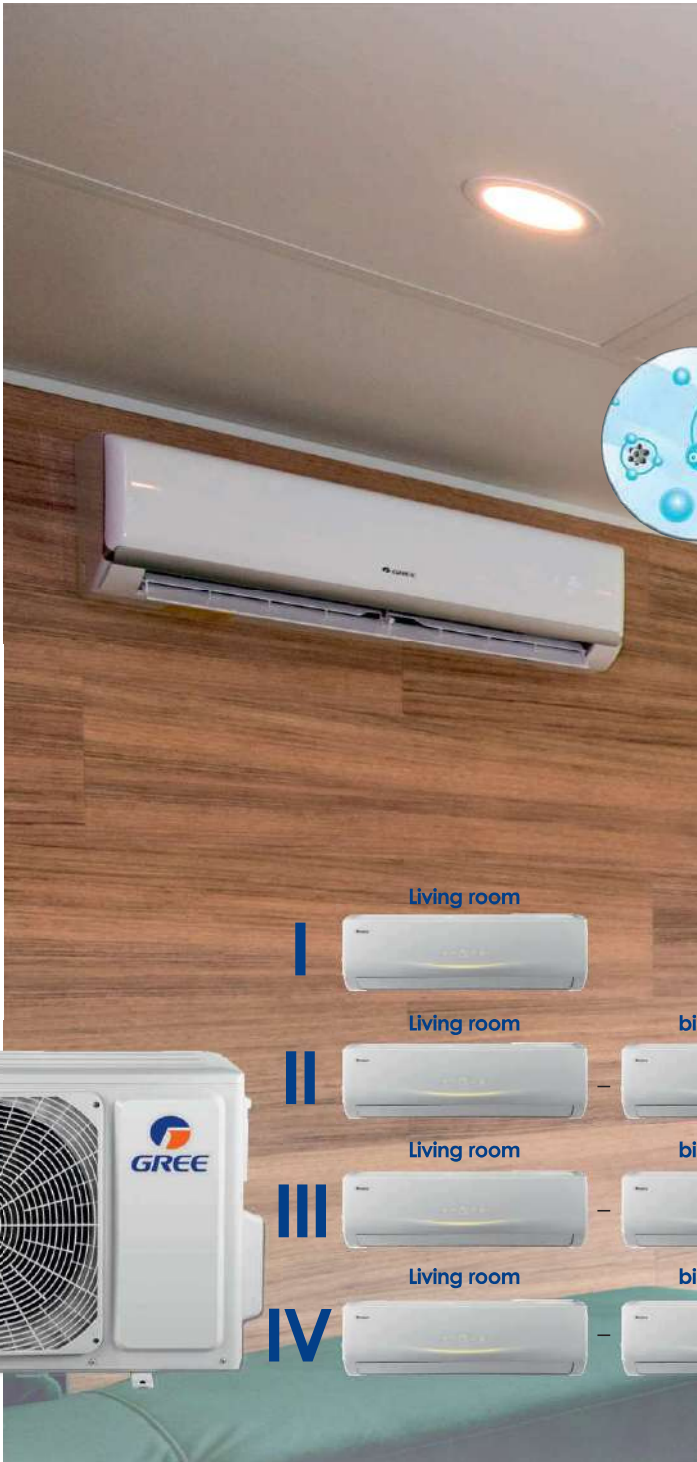


UNDERFLOOR HEATING - HEATING FILM

The heating film is a flexible, thin infra-red electric heater. It is offered in different heating capacities and widths. The heat and infra-red generator is a mixture of graphite paste and the heating power depends on its density and proportion.



The use of heating films is unlimited, the heating speed, large heating surface, flexibility and precision of control allow for their application in many unusual situations.

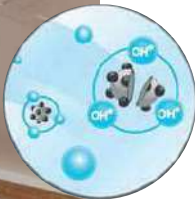


AIR CONDITIONING SYSTEM

Concern of the natural environment and based on the latest technological solutions, Gree presents innovative air-conditioning systems that, thanks to the savings in energy consumption, are environment -friendly.

PLASMA IONIZER

It is an active electrostatic filter, which first thanks to air ionization causes negative ions to attract and surround pollutants, viruses, bacteria and fungal spores to separate them after the reaction with these particles on the surface of the electrostatic filter.



MULTI ROOM SYSTEM

The location of refrigeration units in individual rooms depends on the customer's needs. 4 systems available.

WARRANTY

Our warranty is the best in the market and provides total protection for LARK products for 12 calendar months from the date of purchase of your mobile home giving you a peace of mind and comfort of use.

You can also enjoy the extended warranty on your home's construction elements that are important for its longevity and durability. Due to the use of materials from leading manufacturers, we are also able to offer products with extended warranty periods as outlined below.

Warranty extended to 24 months for:

Lark furniture and upholstered furniture
Soft furniture upholstery and chairs
Shower cubicles and shower doors
Sanitaryware, wash basin and taps
Contacts and switches provided by Le Grand
Interior doors and door handles
LED lights and lamp housings
Door and window fittings
Whirlpool home appliances

Warranty extended to 5 years
(4 years over 12 months) for:

- PVC windows and doors**
- Condensing combi boiler**
- Fully galvanized steel frame*

Warranty extended to 10 years
(9 years over 12 months) for:

- PVC elevation
- Roof tiles
- Gutters and downpipes

Warranty extended to 15 years
(14 years over 12 months) for:

- Franke kitchen sinks
- Forbo PVC flooring

* Warranty applies to zinc coating. It is also possible to extend the warranty period to 5 years provided that you allow an annual chassis review in year 3, 4 and 5 of the home use

** These additional warranty products require regular servicing and proper maintenance according to the manufacturer's service manual

Safety

Your safety is Lark's priority! All used materials fulfill highest structural and safety standards.

Our houses are built in accordance with all the requirements of the European standard EN1647 which means that they are suitable for seasonal or holiday accommodation. Also this year we are proud to present new models of our houses that meet all the requirements of the British standard BS3632 which means that it is more suitable for year round living! Additionally Lark models are certified by the TÜV Rheinland.



bsi.

Membership number 47654081



Looking for the best solutions for recreational construction, we have created a construction system based on modular elements, which are the future of construction methods in the 21st century. Our architects and designers have invented a technology that allows for quick and effective assembly of structures, even in one day. The structure of the modules are based on a wooden frames, which are natural, light and long-lasting solutions. The modular system allows you to create surfaces according to the customer's needs without organizing large construction teams. Each of the modules is an independent structure, and their connection is not only easy, but also allows you to configure many variants of the structure in a vertical or horizontal direction. Moreover, the modules represent different rooms, corridors, stairs and many more.



LARK SPA

The independent **SPA module** is the latest offer in LARK's offer. A specially designed wellness center, offering a number of innovative, modern features, ensures comfort and relaxation at the highest level. Richly equipped incl. with a Jacuzzi, sauna, shower, and if desired toilet, made of high-quality materials, will make every user feel wonderful.



LARK

SaniModule

Free-standing, multifunctional sanitary modules are the perfect equipment for camping parks. The use of high-class waterproof materials will allow you to enjoy the properties of such an excellent solution for a long time. **SaniModule Lark** offers the possibility of adapting the product to your own needs and expectations.





Lark Leisure Homes

tel. +48 94 314 9700, mobile: +48 503 939 457

e-mail: office@larkfactory.com

Poland, 76-150 Darłowo, Sowińskiego 12A

www.larkfactory.com

www.larkfactory.pl

www.larkfactory.de

www.larkfactory.nl

www.larkfactory.be

www.larkfactory.fr

www.larkfactory.ch

www.larkfactory.dk

www.larkfactory.no

www.larkfactory.it

www.larkfactory.hu

www.larkfactory.cz

www.larkfactory.uk

www.larkfactory.hr

www.larkfactory.es

www.larkfactory.pt

www.larkfactory.se

www.larkfactory.fi

www.larkfactory.fi

www.larkfactory.at

www.larkfactory.us

www.larkfactory.lu

www.larkfactory.rs

www.larkfactory.gr

www.larkfactory.ru

www.larkfactory.ro



@larkleisurehomes



@larkleisurehomes

